

TEXAS A&M UNIVERSITY

# COVID-19 Experts Guide

*Compiled by the Division of Marketing & Communications*



## Expert Areas

- 1-2** Pandemic Preparedness and Government Response
- 3-4** Infectious Diseases and Mitigation
- 5** Personal and Societal Impacts
- 6** Economic and Retail Impacts
- 7** Animals and Agriculture

## Online Resources and Contacts

### **TEXAS A&M CORONAVIRUS UPDATES**

The university regularly updates its guidelines for students, faculty and staff regarding COVID-19 and provides answers to frequently-asked questions. [tamu.edu/coronavirus](https://tamu.edu/coronavirus)

### **TEXAS A&M DIVISION OF MARKETING & COMMUNICATIONS**

Members of the news team can assist in contacting experts and fielding questions from the media. [today.tamu.edu/press-room](https://today.tamu.edu/press-room)

*Texas A&M University has more than 20 faculty experts available to discuss every aspect of the new coronavirus, COVID-19, from how the virus spread and its societal impacts to policy implications and preventative measures.*

*In this guide, media will find important information for experts and a central point of contact for Texas A&M University inquiries regarding the school's response to COVID-19.*

---



**TEXAS A&M EXPERTS ON**

# Pandemic Preparedness and Government Response



## **GERALD PARKER**

**Associate Dean for Global One Health, Director of the Pandemic and Biosecurity Policy Program, Institute for Infectious Animal Diseases strategic advisor, Texas A&M University College of Veterinary Medicine and Biomedical Sciences/Bush School of Government and Public Service**

Parker is a former commander and deputy commander of the U.S. Army Medical Research Institute of Infectious Diseases, and held senior positions at the Department of Homeland Security, Department of Health and Human Services and Department of Defense. He is an expert in pandemic preparedness, public health preparedness and response, biodefense and global health security.

Contact: 240-405-8703 | [gparker@cvm.tamu.edu](mailto:gparker@cvm.tamu.edu)

## **CHRISTINE CRUDO BLACKBURN**

**Pandemic and Biosecurity Policy Program Deputy Director, Texas A&M University Bush School of Government and Public Service**

Blackburn researches pandemic disease policy and control, and can discuss preparedness, response and basic information about COVID-19.

Contact: 979-862-1324  
[cblackburn@tamu.edu](mailto:cblackburn@tamu.edu)

## **DENNIS CARROLL**

**Senior Fellow, Texas A&M University Bush School of Government and Public Service**

Carroll recently retired as director of the U.S. Agency for International Development's (USAID) Emerging Threats Division, where he led the agency's responses to the spread of avian influenza and the West Africa Ebola epidemic. Before that, he served as senior infectious diseases advisor for the U.S. Centers for Disease Control and Prevention.

Contact: 202-999-6144  
[dcarroll008@gmail.com](mailto:dcarroll008@gmail.com)



**TEXAS A&M EXPERTS ON**

# Pandemic Preparedness and Government Response (cont.)

## **TIMOTHY CALLAGHAN**

**Assistant Professor in Health Policy and Management**, *Texas A&M University School of Public Health*

Callaghan researches health politics and anti-vaccine thinking. He can discuss government decision-making related to disease response and issues of vaccination.

Contact: 979-436-0960  
[callaghan@tamu.edu](mailto:callaghan@tamu.edu)

## **RAY BROWNING**

**Associate Training Specialist**, *Texas A&M Engineering Extension Service's (TEEX) Emergency Services Training Institute (ESTI)*

Browning is available to explain how TEEX is working to train first responders to manage calls regarding COVID-19.

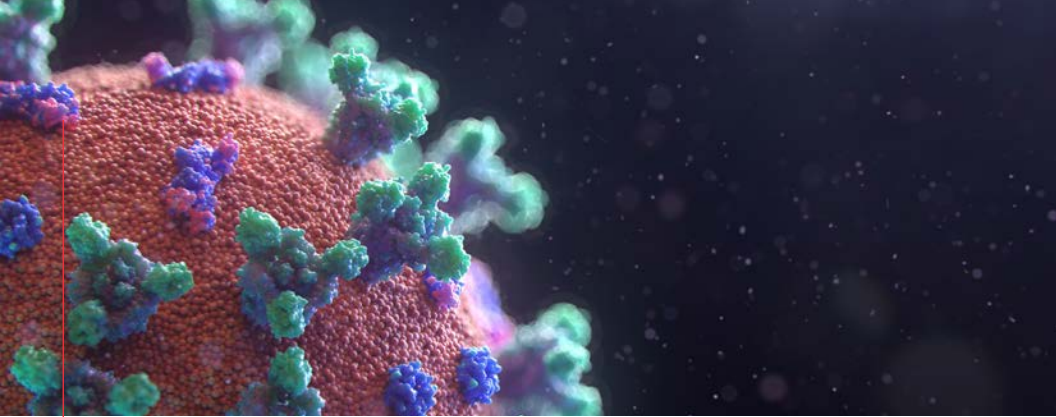
Contact: 979-458-5628  
[ray.browning@teex.tamu.edu](mailto:ray.browning@teex.tamu.edu)

## **ANDREW NATSIOS**

**Executive Professor and Director of the Scowcroft Institute of International Affairs**, *Texas A&M University Bush School of Government and Public Service*

Natsios is a former administrator of the U.S. Agency for International Development (USAID) and is an expert on foreign aid and policy, global famine and refugee crises. Natsios can discuss how American foreign aid programs can be used in response to COVID-19.

Contact: 979-862-1154  
[anatsios@tamu.edu](mailto:anatsios@tamu.edu)



## TEXAS A&M EXPERTS ON

# Infectious Diseases and Mitigation



### REBECCA FISCHER

**Assistant Professor in Epidemiology & Biostatistics,**  
*Texas A&M University School of Public Health*

Fischer is an epidemiologist who can discuss infectious diseases, particularly outbreaks and epidemics. Her research has focused on global health, epidemic investigations, risk factors for infectious diseases and more.

Contact: 512-567-7048 | [rfischer@tamu.edu](mailto:rfischer@tamu.edu)

### CYNTHIA WESTON

**Assistant Professor and Associate  
Dean for Clinical and Outreach  
Affairs, Texas A&M University College of  
Nursing**

Weston is a family nurse practitioner and primary care provider. She can discuss hygiene tips, how COVID-19 spreads and ways to mitigate infection.

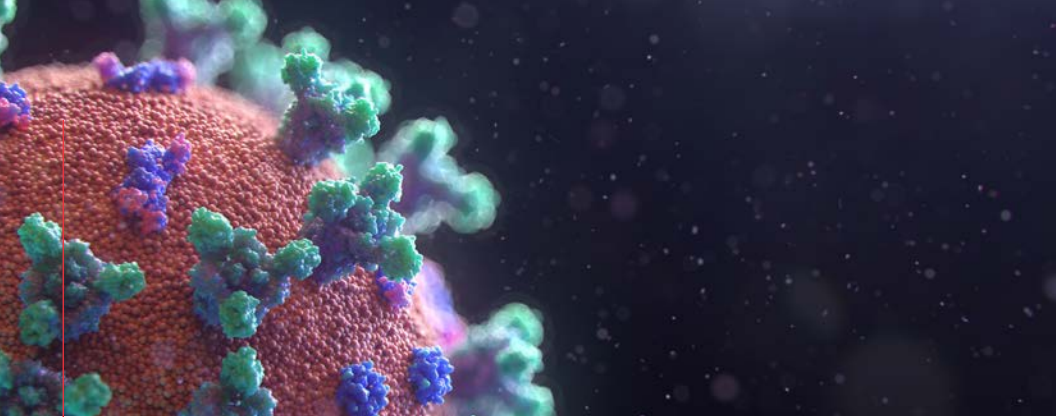
Contact: 979-436-0178  
[cweston@tamu.edu](mailto:cweston@tamu.edu)

### ROBIN MURPHY

**Raytheon Professor of Computer  
Science and Engineering, College of  
Engineering**

Murphy's primary research is in artificial intelligence for mobile robots as applied to disaster robotics. She is available to discuss how robots could be used to mitigate the COVID-19 pandemic.

Contact: 979-845-8737  
[robin.r.murphy@tamu.edu](mailto:robin.r.murphy@tamu.edu)



## TEXAS A&M EXPERTS ON

# Infectious Diseases and Mitigation (cont.)

### **JASON MCKNIGHT**

**Clinical Assistant Professor, Texas A&M University College of Medicine**

McKnight is a physician for Texas A&M's Family Medicine Residency. He can discuss the virus as it relates to symptoms, populations at risk and preventative measures to stay healthy.

Contact: 936-635-5125

[jmcknight@tamu.edu](mailto:jmcknight@tamu.edu)

### **ARUM HAN**

**Professor of Electrical and Computer Engineering, Texas A&M University College of Engineering**

An expert in biomedical engineering, Han can discuss his research in technology to rapidly develop new therapeutics against emerging viral threats, including for COVID-19.

Contact: 979-845-9686

[arum.han@tamu.edu](mailto:arum.han@tamu.edu)

### **ALISON PITTMAN**

**Clinical Assistant Professor, Texas A&M University College of Nursing**

Pittman is a pediatric nurse who can discuss how children are affected by COVID-19, as well as the response of parents and schools to the virus.

Contact: 979-436-0140

[pittman@tamu.edu](mailto:pittman@tamu.edu)

## TEXAS A&M EXPERTS ON

# Personal and Societal Impacts



### **ANNMARIE MACNAMARA**

**Assistant Professor**, *Texas A&M University Department of Psychological & Brain Sciences*

MacNamara can discuss anxiety surrounding COVID-19. She specializes in the emotional response to health and disease.

Contact: 917-770-0942

[amacnamara@tamu.edu](mailto:amacnamara@tamu.edu)

### **LU TANG**

**Associate Professor**, *Texas A&M University Department of Communication*

Tang is an expert on health communication and social media. She can discuss the online reaction to infectious diseases and how officials should use social media to inform the public.

Contact: [ltang@tamu.edu](mailto:ltang@tamu.edu)

### **KRYSTAL SIMMONS**

**Clinical Associate Professor**, *Texas A&M University Department of Educational Psychology*

Simmons can discuss how parents can talk to their children about the coronavirus in a developmentally-appropriate way. She can also provide recommendations for monitoring and minimizing concerning behavior (such as anxiety) that have resulted from the pandemic.

Contact: [ktcook@tamu.edu](mailto:ktcook@tamu.edu)

### **MIQUELA SMITH**

**Healthy Texas Specialist**, *Texas A&M University AgriLife Extension Service*

Smith can speak to how people can prepare themselves and their homes for potential quarantine.

Contact: 806-862-4601

[miquela.smith@ag.tamu.edu](mailto:miquela.smith@ag.tamu.edu)

### **JESSICA BERNARD**

**Assistant Professor**, *Texas A&M University Department of Psychological & Brain Sciences*

Bernard can discuss the impact of social distancing on seniors and older adults, as well as how less mental and physical activity can result from isolation, quarantine or social distancing.

Contact: 412-298-9773

[jessica.bernard@tamu.edu](mailto:jessica.bernard@tamu.edu)

### **CEYHUN EK SIN**

**Assistant Professor**, *Texas A&M University Department of Electrical and Computer Engineering*

Eksin researches how the interactions of individuals can affect system evolution and operation in complex systems. In the case of epidemics, he looks to answer how behavior, society's connectivity and disease factors come together to determine the spread of infection.

Contact: 979-458-2363

[eksinc@tamu.edu](mailto:eksinc@tamu.edu)



**TEXAS A&M EXPERTS ON**

# Economic and Retail Impacts



## **VENKATESH SHANKAR**

**Center for Retailing Studies Director of Research,**  
*Texas A&M University Mays Business School*

Shankar can speak to the impact of COVID-19 on the economy and businesses, retailing, energy and the healthcare industries.

Contact: 979-777-7436  
[vshankar@mays.tamu.edu](mailto:vshankar@mays.tamu.edu)

## **SCOTT BENEDICT**

**Executive Professor, Center for Retailing Studies Director,** *Texas A&M University Mays Business School*

Benedict can discuss the virus' impacts on retailing, including supply chain management, safe shopping, employee safety and placing limits on cleaning supplies.

Contact: 479-366-1316  
[sbenedict@mays.tamu.edu](mailto:sbenedict@mays.tamu.edu)

## **KATIE KIRSCH**

**Research Associate,** *Texas A&M University Department of Environmental & Occupational Health; Department of Epidemiology & Biostatistics; School of Public Health*

Kirsch can speak about precautions hotel managers and staff can take to improve guest and employee health and safety.

Contact: [krkirsch@tamu.edu](mailto:krkirsch@tamu.edu)





**TEXAS A&M EXPERTS ON**

# Animals and Agriculture



**HEATHER SIMMONS**

**Associate Director**, *Texas A&M University Institute for Infectious Animal Diseases*

Simmons is also department head and extension program leader for Veterinary Medical Extension. She can speak about how the virus impacts livestock and animals.

Contact: 979-862-3202  
[hlsimmons@ag.tamu.edu](mailto:hlsimmons@ag.tamu.edu)

**DAVID ANDERSON**

**Economist**, *Texas A&M University AgriLife Extension Service*

Anderson's research activities are in livestock and food products marketing and policy. He can discuss how COVID-19 impacts the economics of agricultural products.

Contact: 979-845-4351  
[danderson@tamu.edu](mailto:danderson@tamu.edu)

**DEBRA ZORAN**

**Professor**, *Texas A&M University College of Veterinary Medicine & Biomedical Sciences*

Zoran specializes in emergency preparedness and response, and the use of simulations in the teaching of disaster.

Contact: 979-845-2351  
[dzoran@cvm.tamu.edu](mailto:dzoran@cvm.tamu.edu)

**KATE CREEVY**

**Associate Professor of Small Animal Clinical Sciences**, *Texas A&M University College of Veterinary Medicine & Biomedical Sciences*

Creevy is a board-certified small animal internal medical specialist with research interests including small animal infectious diseases.

Contact: 706-224-0398  
[kcreevy@cvm.tamu.edu](mailto:kcreevy@cvm.tamu.edu)



[experts.tamu.edu](http://experts.tamu.edu) | [today.tamu.edu](http://today.tamu.edu)

Follow us on Twitter: @TAMU