

BEYOND THE NUMBERS

A Newsletter from the Office of Institutional Studies and Planning



IN THIS ISSUE

OISP Welcomes New Team Members

Website Updates

Do you Know Quick Facts

OISP Activities

Institutional Studies and Planning

129 Teague

College Station, TX 77843

Phone: 979-845-7838

Email: oisp@tamu.edu



<http://www.tamu.edu/oisp>

OISP Welcomes New Team Members

In the summer of 2005, the Office of Institutional Studies and Planning welcomed Dr. Ming Wang and Mr. Kenneth Johnson as team members.

Ming is our Assistant Director. Besides generating student and course reports, she also represents OISP on a variety of University Committees. Ming came to us from Clayton State University in the Atlanta area, where she served as Director of Institutional Research and Planning. Her major research interests are institutional factors affecting student outcomes.

Kenny Johnson, Senior System Analyst, joined us from Alexandria where he was Director of Administrative Computing Services at LSU. Kenny primarily deals with faculty and course data, and generates longitudinal reports. In his leisure time he enjoys walking and reading mystery novels and techno-thrillers.



A Glance at Fall 2005

The OISP Data Brochure provides the quick facts of the University. Here are the exemplary facts you can find from the Data Brochure:

- TAMU enrolled 44,578 students in Fall 2005.
- 81% (36,066) are undergraduate students.
- 27% (9,610) of undergraduates are first-generation university students.
- Of the 7,104 First-Time In College students, 14% (1,001) are of Hispanic ethnic origin; 3.6% (256) are of African-American origin.
- The Dwight Look College of Engineering continues to have the largest number of students at all levels (8,836; or 20% of TAMU total enrollment).
- College of Education and Human Development had the largest increase in undergraduate enrollment of 248 (6.4%). College of Science had the largest increase in Ph.D enrollment of 27 (7.4%).

OISP Website

OISP is continuing its tradition of on-line information distribution on the web. We develop and maintain a cycle of annual reports and documents designed to support the recurring information needs of TAMU including student enrollment profiles, course enrollments, faculty teaching workloads, an institutional fact book, and a number of other standard reports such as studies of student retention and graduation rates, average faculty salaries, student credit hour production; and comparisons with Texas A&M University's peer land grant universities.



BEYOND THE NUMBERS

? Do You Know Quick Facts ?

Fall 2005 Page 2

Graduation and Retention Rates – TAMU's six-year graduation rate is at a record high. Of the 1999 cohort of entering full-time first-time freshmen, 77.3% had graduated by 2005. In the past nine years, TAMU first-time full-time, baccalaureate degree-seeking student one-year persistence rate has gone up from 87.8% for the 1997 cohort to 91.9% for the 2004 cohort.

Most popular undergraduate majors – The five most popular majors according to number of graduates are as follows: Interdisciplinary Studies, Agricultural Development, Marketing, Accounting, and Biomedical Sciences.

Degrees Conferred – In Fiscal Year 2005, TAMU conferred a total of 10,310 academic degrees, 74.8% are at the baccalaureate level, 18.9% at the master's level, 5.1% at the doctoral level, and 1.2% at the professional level.

Five-Year Increase in Degrees Awarded – There is a 6.9% increase in the TAMU total degrees awarded from Fiscal Year 2001 to 2005. The increases are 29% at the Master's level, 3.7% at the Doctoral level, and 2.9% at the Baccalaureate level. In the five-year period, College of Education and Human Development has increased its total number of degrees awarded by 35.6%.

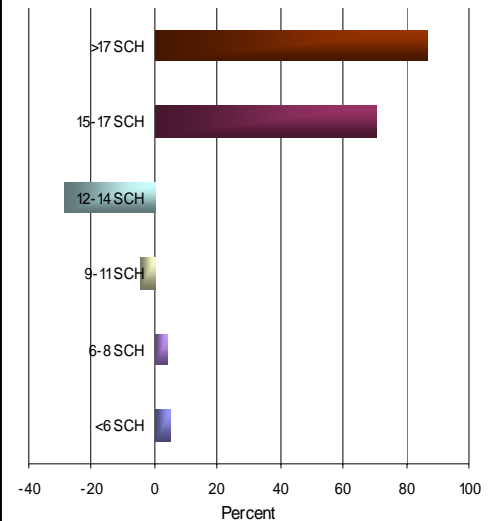
Doctoral Students—TAMU awarded 13,972 research doctorates from 1958-2003, according to 'Survey of Earned Doctorates (SED)' (*SED is an annual survey supported by National Science Foundation and five other federal agencies to systematically collect data from earned doctoral students nationwide.*) At TAMU, Engineering produced the highest percentage (19.5) of all the doctorates, followed by education (16.5), physical sciences (15.1), agriculture (14.6), and biological sciences (13.5).

Student Financial Aid (FA) – In Fiscal Year 2005, TAMU awarded a total of \$241,055,608 to undergraduates. This is a 15.8% annual increase in unadjusted dollars. When broken down by FA categories, both Scholarships and Fee Remission increased by 24% compared with 2004.

Faculty & Staff—13.8% of TAMU instructional faculty are from ethnic minority groups. Of the 129 newly hired faculty in Fall 2005, 20.9% are from ethnic minority groups.

Fall 2005 Average Classroom Utilization – TAMU lecture classroom usage is 33.6 hrs/wk, and Teaching Labs are 24.9 hrs/wk. (*THECB Standards are: 38.0 hrs/wk for classrooms; 25.0 hrs/wk for Teaching Labs.*)

Semester Credit Hour (SCH) Increase



The flat tuition policy resulted in a significant increase in the undergraduate SCH load. Compared with Fall 2004, the number of students carrying 15-17 SCH increased by 6,313 (70.4%). The number of students carrying more than 17 SCH also increased by 432 (86.6%).

More about Our Students Fall 2005

⇒ **Top feeder Texas Counties** are: Harris, Brazos, Dallas, Tarrant, Bexar, Fort Bend, Travis, Montgomery, Collin, and Denton.

⇒ **Top feeder States** are: Texas, Louisiana, California, Oklahoma, Florida, New Mexico, Illinois, Virginia, Missouri, and Colorado.

⇒ **Top feeder Countries** are: United States, India, China, Korea, Taiwan, Mexico, Turkey, Indonesia, Colombia, and Canada.

⇒ Guess what are the most common first names of TAMU Students? Matthew (668); Christopher (645); Michael (633); and John and Jennifer (581).

Selected OISP Activities

- ◆ In the summer and the fall, OISP completed a total of 14 compliance reports to the Federal and State governments. We also participated in 25 surveys at the national level.
- ◆ In Fall 2005, OISP and the provost's office presented 'Weighted Semester Credit Hour (WSCH): Issues and Actions' to each of the schools and colleges to raise attention to maximizing TAMU WSCH production.
- ◆ On December 7th, the Cognos (data mining tool) implementation team had its first working meeting to discuss the charges for the team, security issues, implementation cycle, and data elements and ownership issues. The team meets monthly. A listserv has also been set up to facilitate the communications among the team members.