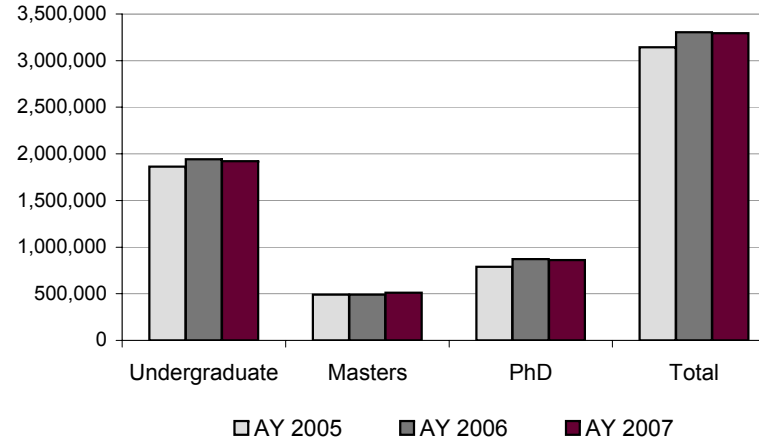
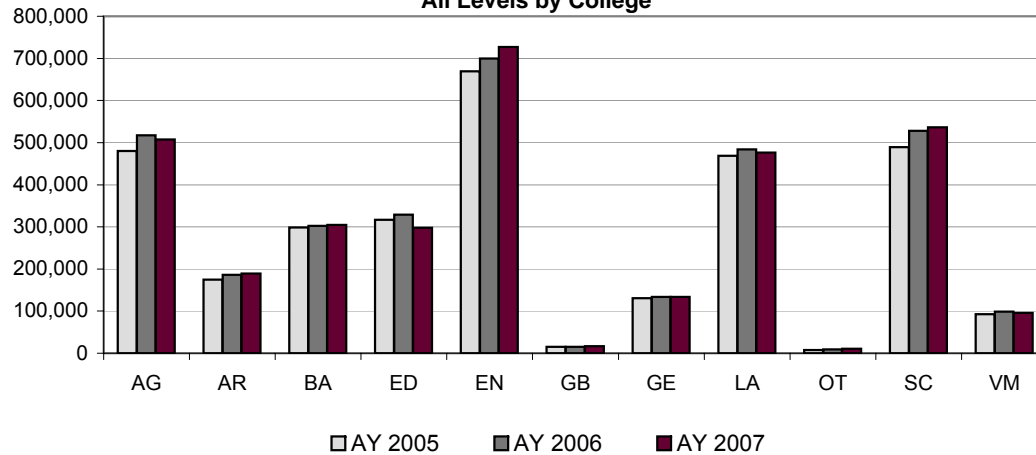


WEIGHTED SEMESTER CREDIT HOURS ALL LEVELS				
	AY 2005	AY 2006	AY 2007	%Δ AY05-AY07
Agriculture	479,792	517,309	507,302	5.73%
Architecture	174,399	185,904	189,210	8.49%
Business Administration	298,626	302,622	304,977	2.13%
Education	317,094	329,128	297,622	-6.14%
Engineering	669,367	699,745	727,011	8.61%
George Bush	15,399	15,470	16,954	10.10%
Geosciences	130,664	133,921	133,404	2.10%
Liberal Arts	468,860	483,657	476,706	1.67%
Other	7,937	8,859	10,356	30.48%
Science	488,902	528,076	536,090	9.65%
Veterinary Medicine	92,544	98,908	96,022	3.76%
UNIVERSITY TOTAL	3,143,584	3,303,599	3,295,654	4.84%

ACADEMIC YEAR
 WEIGHTED SEMESTER CREDIT HOURS
 Total University by Level

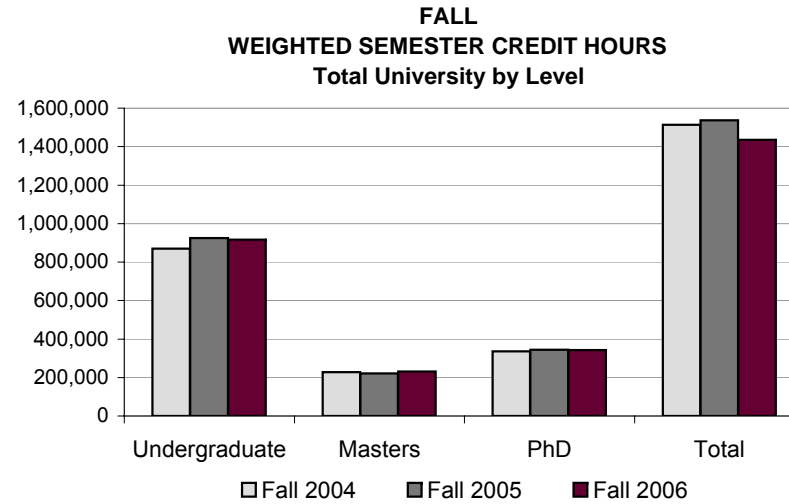


ACADEMIC YEAR
 WEIGHTED SEMESTER CREDIT HOURS
 All Levels by College

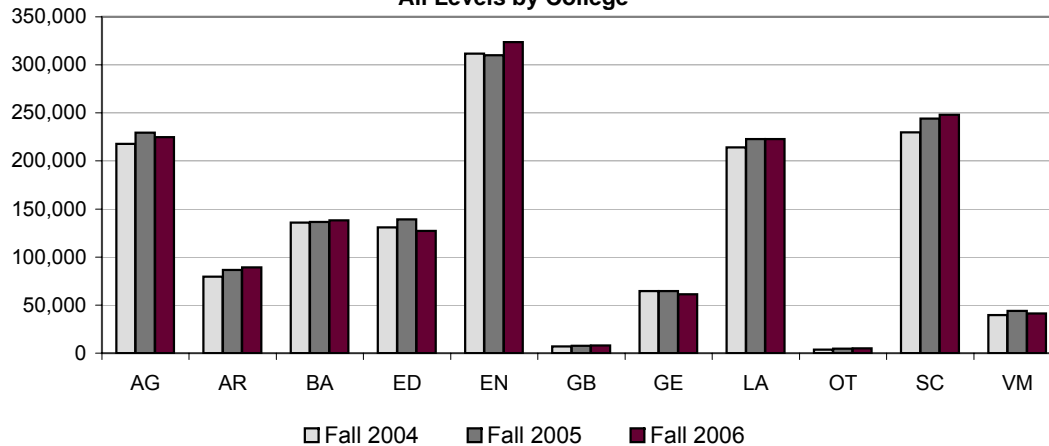


WSCH was computed from funded SCH using the weights applicable for each term, has Excess Hours removed, includes the UG T/TT Bonus, but does not include Vet Professional hours
 Other may include SABR, CAEX, INTG, & COFD

WEIGHTED SEMESTER CREDIT HOURS ALL LEVELS				
	Fall 2004	Fall 2005	Fall 2006	%Δ Fa04-Fa06
Agriculture	217,809	229,437	224,755	3.19%
Architecture	79,606	86,421	89,231	12.09%
Business Administration	135,839	136,409	138,335	1.84%
Education	131,026	139,321	127,227	-2.90%
Engineering	311,814	309,876	323,839	3.86%
George Bush	6,962	7,588	7,891	13.34%
Geosciences	64,502	64,601	61,291	-4.98%
Liberal Arts	214,058	222,821	222,759	4.06%
Other	3,596	4,592	5,143	43.02%
Science	229,756	244,110	248,040	7.96%
Veterinary Medicine	39,667	43,868	41,389	4.34%
UNIVERSITY TOTAL	1,434,635	1,489,044	1,489,900	3.85%

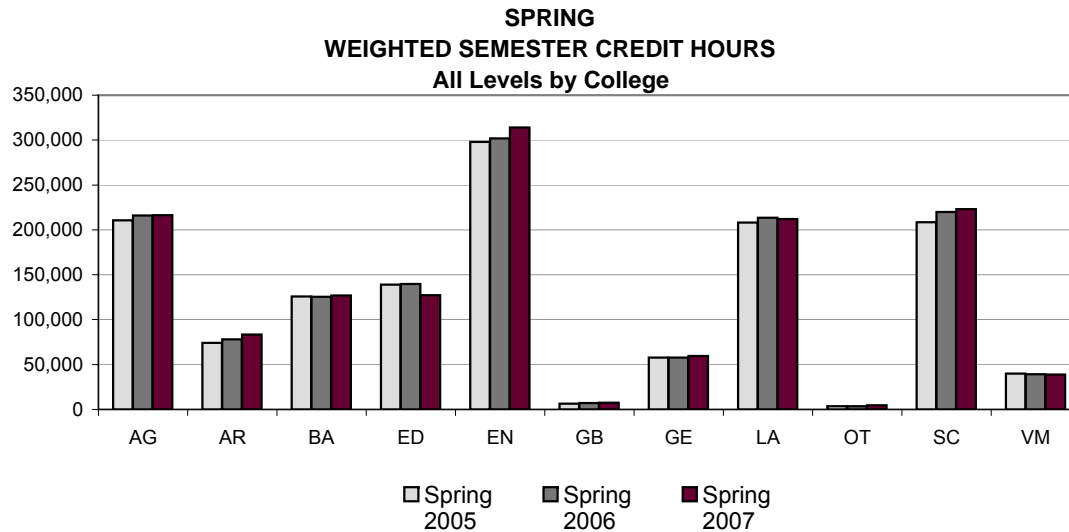
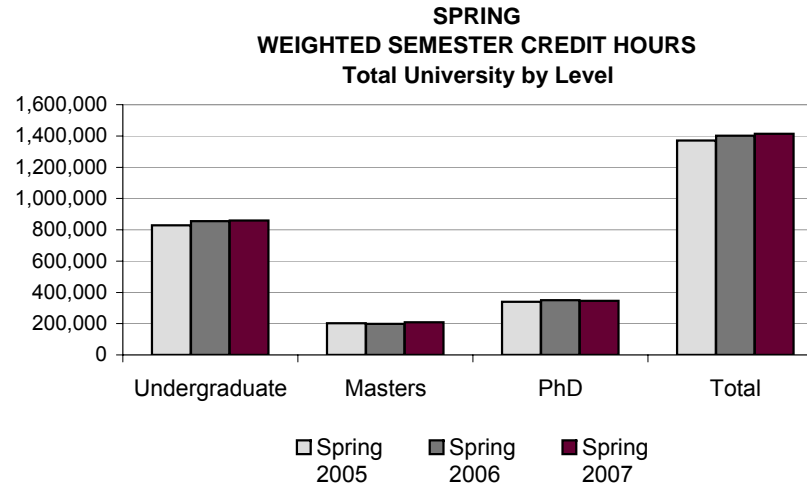


FALL
 WEIGHTED SEMESTER CREDIT HOURS
 All Levels by College



WSCH was computed from funded SCH using the weights applicable for each term, has Excess Hours removed, includes the UG T/TT Bonus, but does not include Vet Professional hours
 Other may include SABR, CAEX, INTG, & COFD

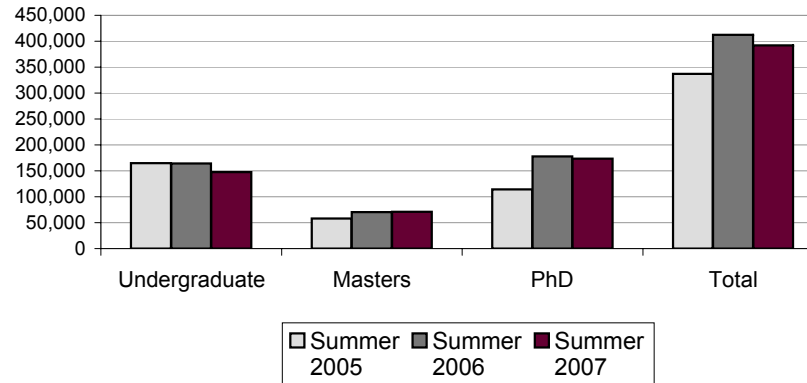
WEIGHTED SEMESTER CREDIT HOURS ALL LEVELS				
	Spring 2005	Spring 2006	Spring 2007	%Δ Sp05-Sp07
Agriculture	210,803	216,127	216,387	2.65%
Architecture	74,212	78,035	83,516	12.54%
Business Administration	125,665	125,601	126,941	1.02%
Education	139,141	139,633	127,162	-8.61%
Engineering	298,081	301,773	313,840	5.29%
George Bush	6,560	7,126	7,515	14.56%
Geosciences	57,668	57,620	59,573	3.30%
Liberal Arts	208,040	213,486	211,936	1.87%
Other	3,409	3,728	4,707	38.08%
Science	208,385	219,814	223,126	7.07%
Veterinary Medicine	39,896	39,200	38,959	-2.35%
UNIVERSITY TOTAL	1,371,860	1,402,143	1,413,662	3.05%



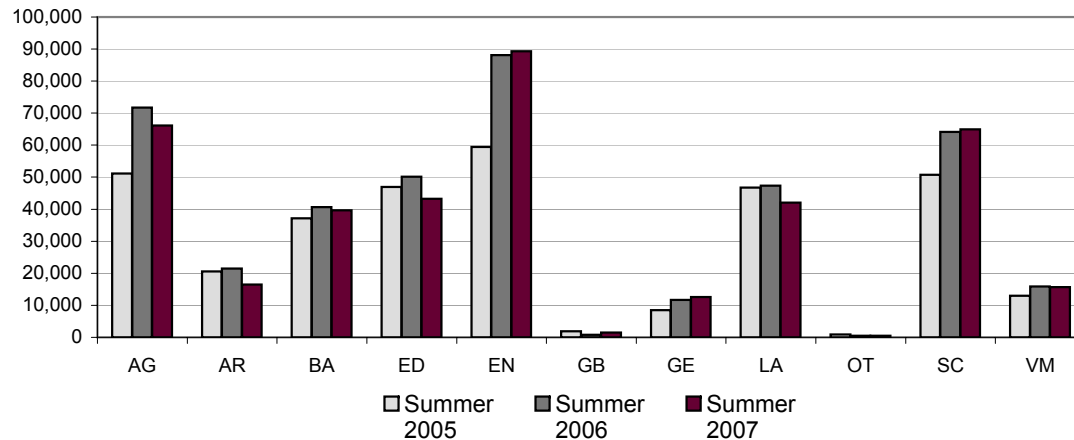
WSCH was computed from funded SCH using the weights applicable for each term, has Excess Hours removed, includes the UG T/TT Bonus, but does not include Vet Professional hours
 Other may include SABR, CAEX, INTG, & COFD

WEIGHTED SEMESTER CREDIT HOURS ALL LEVELS				
	Summer 2005	Summer 2006	Summer 2007	%Δ Su05-Su07
Agriculture	51,180	71,745	66,160	29.27%
Architecture	20,581	21,448	16,463	-20.01%
Business Administration	37,122	40,612	39,701	6.95%
Education	46,927	50,174	43,233	-7.87%
Engineering	59,472	88,096	89,332	50.21%
George Bush	1,877	756	1,548	-17.53%
Geosciences	8,494	11,700	12,540	47.63%
Liberal Arts	46,762	47,350	42,011	-10.16%
Other	932	539	506	-45.71%
Science	50,761	64,152	64,924	27.90%
Veterinary Medicine	12,981	15,840	15,674	20.75%
UNIVERSITY TOTAL	337,089	412,412	392,092	16.32%

SUMMER
WEIGHTED SEMESTER CREDIT HOURS
 Total University by Level



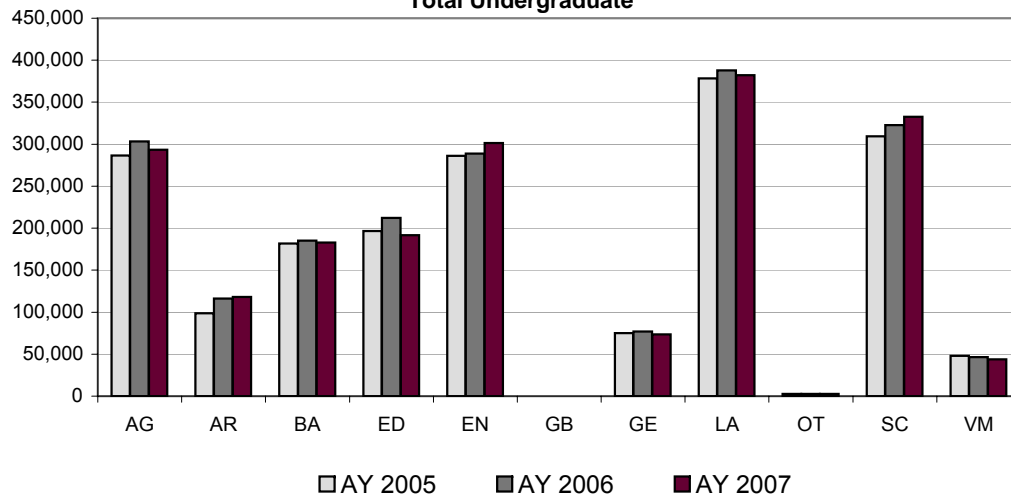
SUMMER
WEIGHTED SEMESTER CREDIT HOURS
 All Levels by College



WSCH was computed from funded SCH using the weights applicable for each term, has Excess Hours removed, includes the UG T/TT Bonus, but does not include Vet Professional hours
 Other may include SABR, CAEX, INTG, & COFD

WEIGHTED SEMESTER CREDIT HOURS UNDERGRADUATE													
	AY 2005				AY 2006				AY 2007				%Δ AY05-AY07
	LD	UD	T/TT Sup	Total	LD	UD	T/TT Sup	Total	LD	UD	T/TT Sup	Total	
Agriculture	84,261	184,097	18,353	286,711	86,917	197,064	19,287	303,268	82,452	192,789	18,286	293,527	2.38%
Architecture	44,549	48,235	5,823	98,607	56,844	52,286	7,213	116,343	54,607	55,734	7,737	118,078	19.75%
Business Admin	58,207	118,818	4,857	181,882	58,038	121,951	5,292	185,281	56,078	121,214	5,588	182,880	0.55%
Education	77,416	115,126	4,227	196,769	79,400	128,008	4,835	212,243	64,659	123,291	3,557	191,507	-2.67%
Engineering	77,201	192,147	16,680	286,028	75,824	196,038	17,082	288,944	78,373	203,794	19,217	301,384	5.37%
George Bush	0	45	2	47	0	50	3	53	0	53	3	56	19.15%
Geosciences	47,435	23,754	3,895	75,084	50,182	22,588	4,187	76,957	48,165	21,022	4,344	73,531	-2.07%
Liberal Arts	204,125	156,039	18,323	378,487	219,653	151,124	17,234	388,011	225,507	141,172	15,375	382,054	0.94%
Other	2,751	90	0	2,841	2,452	243	0	2,695	2,726	0	0	2,726	-4.05%
Science	202,216	95,996	11,313	309,525	216,493	95,235	10,868	322,596	229,628	91,283	11,733	332,644	7.47%
Veterinary Med	6,284	38,947	2,806	48,037	5,587	38,476	2,499	46,562	4,701	36,603	2,509	43,813	-8.79%
UNIVERSITY TOTAL	804,445	973,294	86,279	1,864,018	851,390	1,003,063	88,500	1,942,953	846,896	986,955	88,349	1,922,200	3.12%

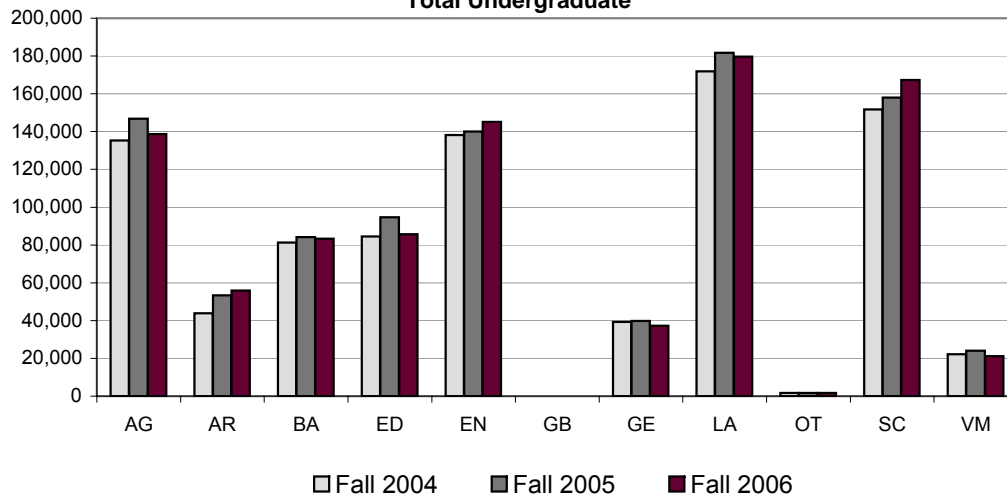
ACADEMIC YEAR
 WEIGHTED SEMESTER CREDIT HOURS
 Total Undergraduate



WSCH was computed from funded SCH using the weights applicable for each term, has Excess Hours removed, includes the UG T/TT Bonus, but does not include Vet Professional hours
 Other may include SABR, CAEX, INTG, & COFD

WEIGHTED SEMESTER CREDIT HOURS UNDERGRADUATE													
	Fall 2004				Fall 2005				Fall 2006				%Δ Fa04-Fa06
	LD	UD	T/TT Sup	Total	LD	UD	T/TT Sup	Total	LD	UD	T/TT Sup	Total	
Agriculture	42,434	84,161	8,742	135,337	46,893	90,721	9,212	146,826	44,121	85,873	8,655	138,649	2.45%
Architecture	20,312	21,122	2,510	43,944	26,690	23,414	3,254	53,358	26,033	26,249	3,619	55,901	27.21%
Business Admin	26,922	51,847	2,524	81,293	28,009	53,477	2,615	84,101	26,972	53,739	2,631	83,342	2.52%
Education	34,502	48,254	1,731	84,487	36,711	55,849	2,180	94,740	31,119	53,080	1,530	85,729	1.47%
Engineering	38,853	91,298	8,110	138,261	39,937	92,038	7,999	139,974	38,322	97,412	9,369	145,103	4.95%
George Bush	0	17	0	17	0	28	1	29	0	21	1	22	29.41%
Geosciences	26,052	11,169	2,061	39,282	27,188	10,465	2,143	39,796	25,438	9,700	2,184	37,322	-4.99%
Liberal Arts	97,857	65,214	8,830	171,901	107,133	65,945	8,645	181,723	110,349	61,875	7,506	179,730	4.55%
Other	1,667	74	0	1,741	1,640	78	0	1,718	1,722	0	0	1,722	-1.09%
Science	105,169	40,916	5,693	151,778	111,562	40,883	5,611	158,056	120,936	40,345	5,952	167,233	10.18%
Veterinary Med	3,600	17,147	1,365	22,112	3,882	18,797	1,361	24,040	2,377	17,611	1,239	21,227	-4.00%
UNIVERSITY TOTAL	397,368	431,219	41,566	870,153	429,645	451,695	43,021	924,361	427,389	445,905	42,686	915,980	5.27%

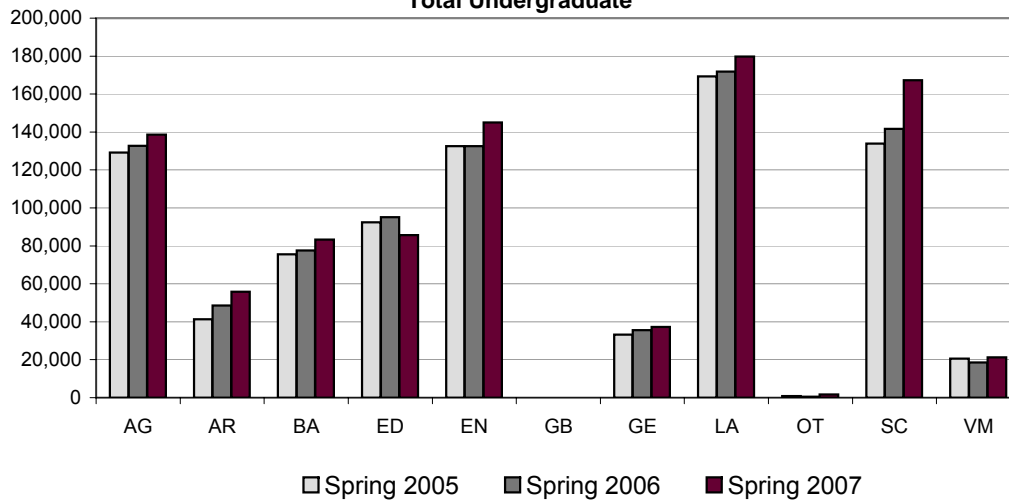
FALL
 WEIGHTED SEMESTER CREDIT HOURS
 Total Undergraduate



WSCH was computed from funded SCH using the weights applicable for each term, has Excess Hours removed, includes the UG T/TT Bonus, but does not include Vet Professional hours
 Other may include SABR, CAEX, INTG, & COFD

WEIGHTED SEMESTER CREDIT HOURS UNDERGRADUATE													
	Spring 2005				Spring 2006				Spring 2007				%Δ
	LD	UD	T/TT Sup	Total	LD	UD	T/TT Sup	Total	LD	UD	T/TT Sup	Total	Sp05-Sp07
Agriculture	38,244	82,541	8,430	129,215	36,293	87,367	8,989	132,649	34,344	89,506	8,640	132,490	2.53%
Architecture	17,655	21,148	2,437	41,240	23,540	22,141	2,937	48,618	24,107	25,319	3,366	52,792	28.01%
Business Admin	25,200	48,364	2,011	75,575	25,435	49,695	2,371	77,501	24,529	50,258	2,552	77,339	2.33%
Education	36,632	53,734	2,062	92,428	36,367	56,632	2,131	95,130	29,703	54,794	1,535	86,032	-6.92%
Engineering	34,404	90,149	7,965	132,518	32,546	91,717	8,206	132,469	36,505	95,398	9,002	140,905	6.33%
George Bush	0	22	2	24	0	11	1	12	0	11	1	12	-50.00%
Geosciences	20,067	11,399	1,736	33,202	22,171	11,402	1,958	35,531	22,249	10,887	2,112	35,248	6.16%
Liberal Arts	89,744	70,778	8,710	169,232	97,701	66,357	7,864	171,922	100,808	62,599	6,995	170,402	0.69%
Other	796	16	0	812	438	0	0	438	498	0	0	498	-38.67%
Science	88,437	40,883	4,628	133,948	96,290	41,065	4,289	141,644	101,192	38,676	4,949	144,817	8.11%
Veterinary Med	2,325	16,965	1,268	20,558	1,657	15,879	1,010	18,546	1,587	15,573	1,113	18,273	-11.11%
UNIVERSITY TOTAL	353,504	435,999	39,249	828,752	372,438	442,266	39,756	854,460	375,522	443,021	40,265	858,808	3.63%

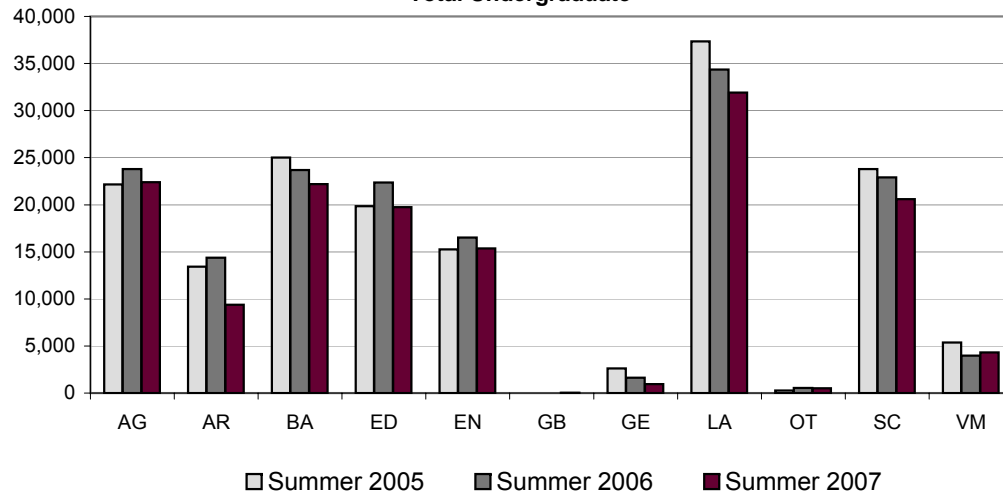
SPRING
WEIGHTED SEMESTER CREDIT HOURS
Total Undergraduate



WSCH was computed from funded SCH using the weights applicable for each term, has Excess Hours removed, includes the UG T/TT Bonus, but does not include Vet Professional hours
 Other may include SABR, CAEX, INTG, & COFD

WEIGHTED SEMESTER CREDIT HOURS UNDERGRADUATE													
	Summer 2005				Summer 2006				Summer 2007				%Δ
	LD	UD	T/TT Sup	Total	LD	UD	T/TT Sup	Total	LD	UD	T/TT Sup	Total	Su05-Su07
Agriculture	3,583	17,395	1,181	22,159	3,731	18,976	1,086	23,793	3,987	17,410	991	22,388	1.03%
Architecture	6,582	5,965	876	13,423	6,614	6,731	1,022	14,367	4,467	4,166	752	9,385	-30.08%
Business Admin	6,085	18,607	322	25,014	4,594	18,779	306	23,679	4,577	17,217	405	22,199	-11.25%
Education	6,282	13,138	434	19,854	6,322	15,527	524	22,373	3,837	15,417	492	19,746	-0.54%
Engineering	3,944	10,700	605	15,249	3,341	12,283	877	16,501	3,546	10,984	846	15,376	0.83%
George Bush	0	6	0	6	0	11	1	12	0	21	1	22	266.67%
Geosciences	1,316	1,186	98	2,600	823	721	86	1,630	478	435	48	961	-63.04%
Liberal Arts	16,524	20,047	783	37,354	14,819	18,822	725	34,366	14,350	16,698	874	31,922	-14.54%
Other	288	0	0	288	374	165	0	539	506	0	0	506	75.69%
Science	8,610	14,197	992	23,799	8,641	13,287	968	22,896	7,500	12,262	832	20,594	-13.47%
Veterinary Med	359	4,835	173	5,367	48	3,800	128	3,976	737	3,419	157	4,313	-19.64%
UNIVERSITY TOTAL	53,573	106,076	5,464	165,113	49,307	109,102	5,723	164,132	43,985	98,029	5,398	147,412	-10.72%

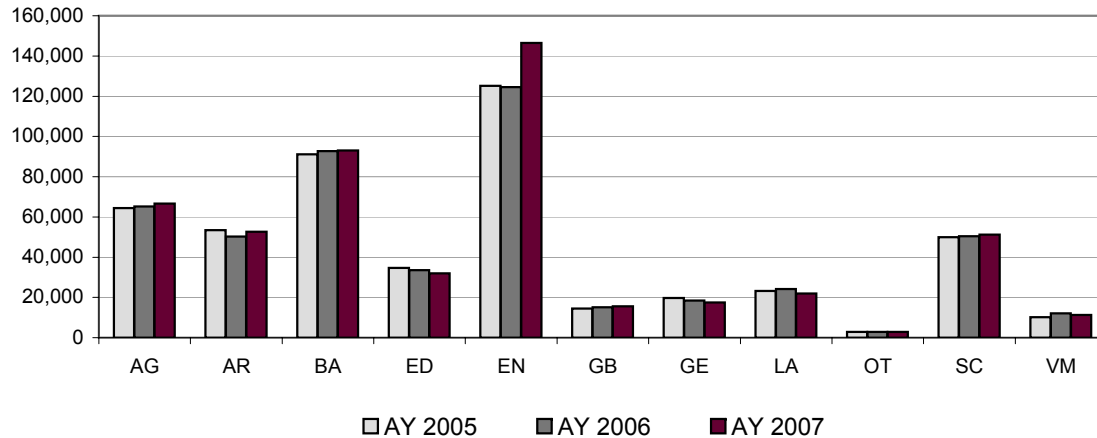
SUMMER
WEIGHTED SEMESTER CREDIT HOURS
Total Undergraduate



WSCH was computed from funded SCH using the weights applicable for each term, has Excess Hours removed, includes the UG T/TT Bonus, but does not include Vet Professional hours
 Other may include SABR, CAEX, INTG, & COFD

WEIGHTED SEMESTER CREDIT HOURS				
MASTERS				
	AY 2005	AY 2006	AY 2007	%Δ AY05 - AY07
Agriculture	64,355	65,202	66,577	3.45%
Architecture	53,503	50,328	52,703	-1.50%
Business Administration	91,206	92,722	93,082	2.06%
Education	34,701	33,488	32,037	-7.68%
Engineering	125,240	124,586	146,453	16.94%
George Bush	14,502	15,085	15,595	7.54%
Geosciences	19,729	18,469	17,531	-11.14%
Liberal Arts	23,145	24,170	21,877	-5.48%
Other	2,873	2,863	2,815	-2%
Science	49,948	50,405	51,165	2.44%
Veterinary Medicine	10,102	12,125	11,248	11.34%
UNIVERSITY TOTAL	489,304	489,443	511,083	4.45%

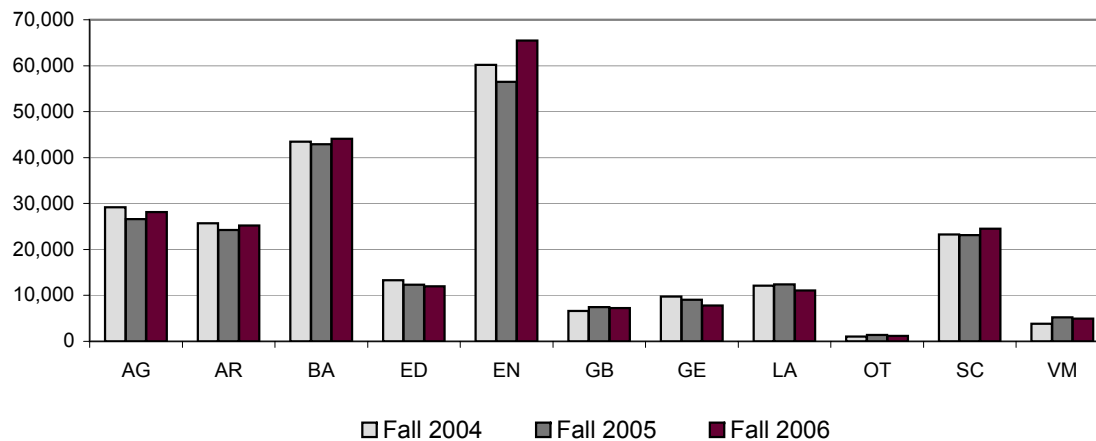
ACADEMIC YEAR
 WEIGHTED SEMESTER CREDIT HOURS
 Masters



WSCH was computed from funded SCH using the weights applicable for each term, has Excess Hours removed, includes the UG T/TT Bonus, but does not include Vet Professional hours
 Other may include SABR, CAEX, INTG, & COFD

WEIGHTED SEMESTER CREDIT HOURS				
MASTERS				
	Fall 2004	Fall 2005	Fall 2006	%Δ Fa04 - Fa06
Agriculture	29,186	26,617	28,171	-3.48%
Architecture	25,719	24,210	25,183	-2.08%
Business Administration	43,485	42,874	44,060	1.32%
Education	13,338	12,342	11,990	-10.11%
Engineering	60,212	56,462	65,463	8.72%
George Bush	6,607	7,428	7,275	10.11%
Geosciences	9,751	9,085	7,816	-19.84%
Liberal Arts	12,135	12,378	11,040	-9.02%
Other	1,073	1,387	1,184	10%
Science	23,253	23,109	24,534	5.51%
Veterinary Medicine	3,828	5,194	4,973	29.91%
UNIVERSITY TOTAL	228,587	221,086	231,689	1.36%

FALL
 WEIGHTED SEMESTER CREDIT HOURS
 Masters



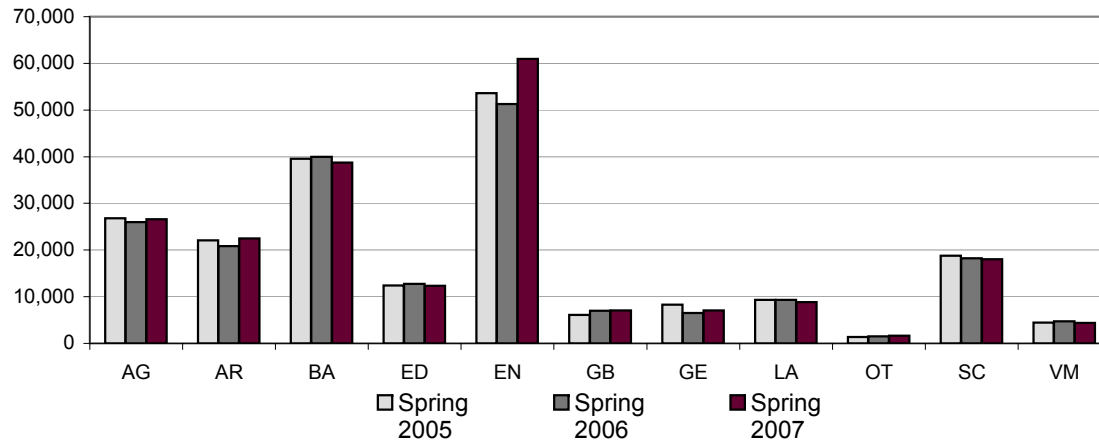
WSCH was computed from funded SCH using the weights applicable for each term, has Excess Hours removed, includes the UG T/TT Bonus, but does not include Vet Professional hours
 Other may include SABR, CAEX, INTG, & COFD

Texas A&M University
 Weighted Semester Credit Hour Three-Year Trend Report

AY 2005 - AY 2007
 Fall, Spring, & Summer

WEIGHTED SEMESTER CREDIT HOURS				
MASTERS				
	Spring 2005	Spring 2006	Spring 2007	%Δ Sp05 - Sp07
Agriculture	26,811	25,976	26,620	-0.71%
Architecture	22,076	20,844	22,505	1.94%
Business Administration	39,545	39,949	38,707	-2.12%
Education	12,379	12,739	12,345	-0.27%
Engineering	53,615	51,312	60,948	13.68%
George Bush	6,100	6,983	7,033	15.30%
Geosciences	8,313	6,532	7,049	-15.21%
Liberal Arts	9,332	9,309	8,860	-5.06%
Other	1,399	1,476	1,631	17%
Science	18,818	18,213	18,065	-4.00%
Veterinary Medicine	4,462	4,697	4,381	-1.82%
UNIVERSITY TOTAL	202,850	198,030	208,144	2.61%

SPRING
WEIGHTED SEMESTER CREDIT HOURS
Masters



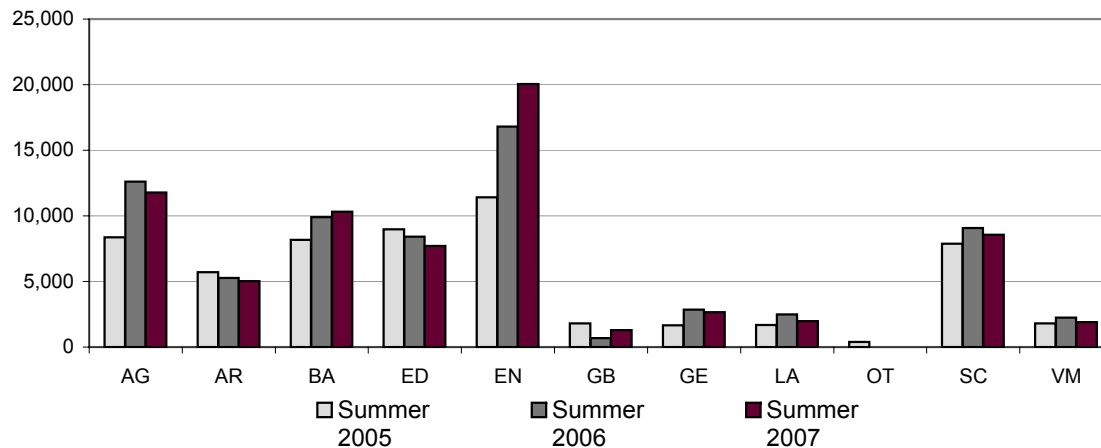
WSCH was computed from funded SCH using the weights applicable for each term, has Excess Hours removed, includes the UG T/TT Bonus, but does not include Vet Professional hours
 Other may include SABR, CAEX, INTG, & COFD

Texas A&M University
 Weighted Semester Credit Hour Three-Year Trend Report

AY 2005 - AY 2007
 Fall, Spring, & Summer

WEIGHTED SEMESTER CREDIT HOURS				
MASTERS				
	Summer 2005	Summer 2006	Summer 2007	%Δ Su05- Su07
Agriculture	8,358	12,609	11,786	41.01%
Architecture	5,708	5,274	5,015	-12.14%
Business Administration	8,176	9,899	10,315	26.16%
Education	8,984	8,407	7,702	-14.27%
Engineering	11,413	16,812	20,042	75.61%
George Bush	1,795	674	1,287	-28.30%
Geosciences	1,665	2,852	2,666	60.12%
Liberal Arts	1,678	2,483	1,977	17.82%
Other	401	0	0	-100%
Science	7,877	9,083	8,566	8.75%
Veterinary Medicine	1,812	2,234	1,894	4.53%
UNIVERSITY TOTAL	57,867	70,327	71,250	23.13%

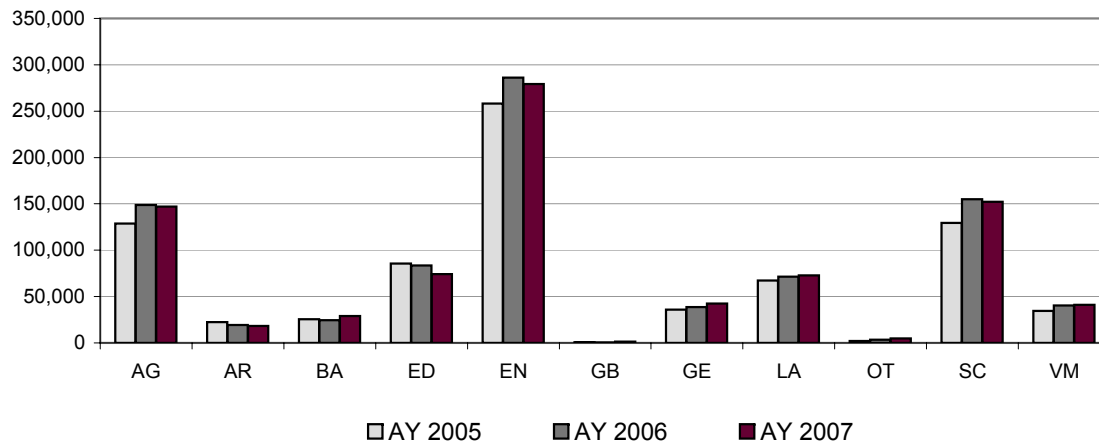
SUMMER
WEIGHTED SEMESTER CREDIT HOURS
Masters



WSCH was computed from funded SCH using the weights applicable for each term, has Excess Hours removed, includes the UG T/TT Bonus, but does not include Vet Professional hours
 Other may include SABR, CAEX, INTG, & COFD

WEIGHTED SEMESTER CREDIT HOURS				
PhD				
	AY 2005	AY 2006	AY 2007	%Δ AY05 - AY07
Agriculture	128,726	148,839	147,198	14.35%
Architecture	22,289	19,233	18,429	-17.32%
Business Administration	25,538	24,619	29,015	13.62%
Education	85,624	83,397	74,078	-13.48%
Engineering	258,099	286,215	279,174	8.17%
George Bush	850	332	1,303	53.29%
Geosciences	35,851	38,495	42,342	18.11%
Liberal Arts	67,228	71,476	72,775	8.25%
Other	2,223	3,301	4,815	116.60%
Science	129,429	155,075	152,281	17.66%
Veterinary Medicine	34,405	40,221	40,961	19.06%
UNIVERSITY TOTAL	790,262	871,203	862,371	9.12%

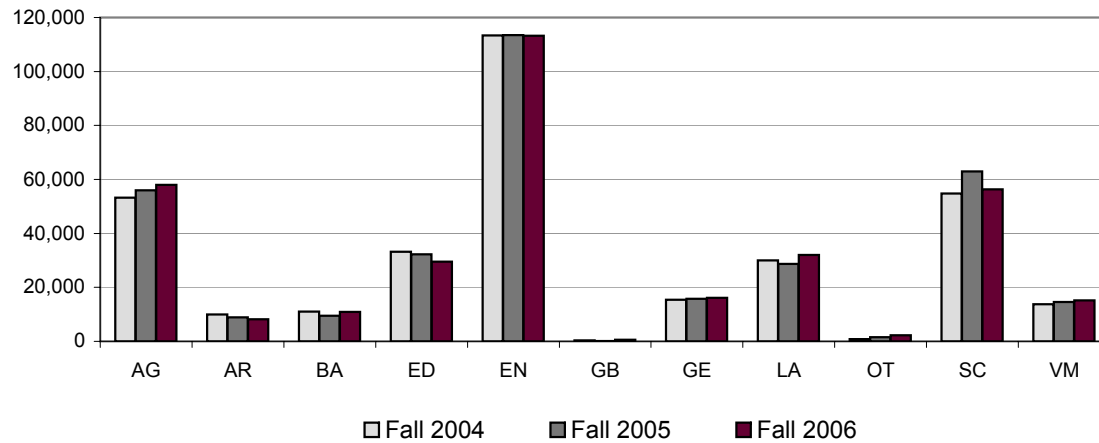
ACADEMIC YEAR
 WEIGHTED SEMESTER CREDIT HOURS
 PhD



WSCH was computed from funded SCH using the weights applicable for each term, has Excess Hours removed, includes the UG T/TT Bonus, but does not include Vet Professional hours
 Other may include SABR, CAEX, INTG, & COFD

WEIGHTED SEMESTER CREDIT HOURS				
PhD				
	Fall 2004	Fall 2005	Fall 2006	%Δ Fa04-Fa06
Agriculture	53,286	55,994	57,935	8.72%
Architecture	9,943	8,853	8,147	-18.06%
Business Administration	11,061	9,434	10,933	-1.16%
Education	33,201	32,239	29,508	-11.12%
Engineering	113,341	113,440	113,273	-0.06%
George Bush	338	131	594	75.74%
Geosciences	15,469	15,720	16,153	4.42%
Liberal Arts	30,022	28,720	31,989	6.55%
Other	782	1,487	2,237	186.06%
Science	54,725	62,945	56,273	2.83%
Veterinary Medicine	13,727	14,634	15,189	10.65%
UNIVERSITY TOTAL	335,895	343,597	342,231	1.89%

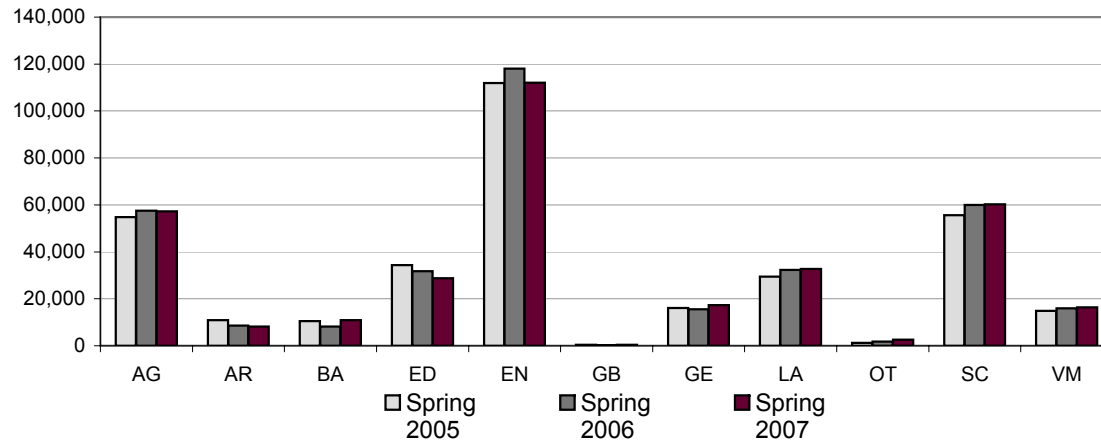
FALL
 WEIGHTED SEMESTER CREDIT HOURS
 PhD



WSCH was computed from funded SCH using the weights applicable for each term, has Excess Hours removed, includes the UG T/TT Bonus, but does not include Vet Professional hours
 Other may include SABR, CAEX, INTG, & COFD

WEIGHTED SEMESTER CREDIT HOURS				
PhD				
	Spring 2005	Spring 2006	Spring 2007	%Δ Sp05 - Sp07
Agriculture	54,777	57,502	57,277	4.56%
Architecture	10,896	8,573	8,219	-24.57%
Business Administration	10,545	8,151	10,895	3.32%
Education	34,334	31,764	28,785	-16.16%
Engineering	111,948	117,992	111,987	0.03%
George Bush	436	131	470	7.80%
Geosciences	16,153	15,557	17,276	6.95%
Liberal Arts	29,476	32,255	32,674	10.85%
Other	1,198	1,814	2,578	115.19%
Science	55,619	59,957	60,244	8.32%
Veterinary Medicine	14,876	15,957	16,305	9.61%
UNIVERSITY TOTAL	340,258	349,653	346,710	1.90%

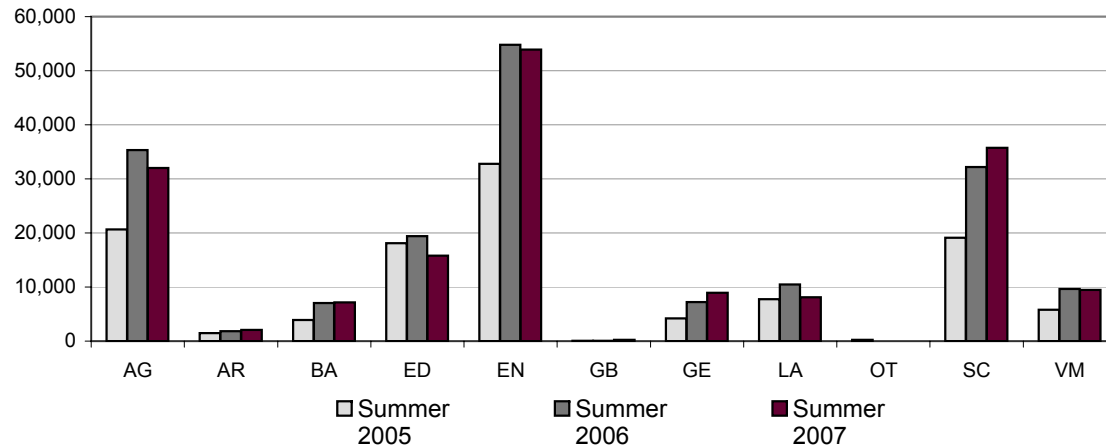
SPRING
WEIGHTED SEMESTER CREDIT HOURS
PhD



WSCH was computed from funded SCH using the weights applicable for each term, has Excess Hours removed, includes the UG T/TT Bonus, but does not include Vet Professional hours
 Other may include SABR, CAEX, INTG, & COFD

WEIGHTED SEMESTER CREDIT HOURS				
PhD				
	Summer 2005	Summer 2006	Summer 2007	%Δ Su05 - Su07
Agriculture	20,663	35,343	31,986	54.80%
Architecture	1,450	1,807	2,063	42.28%
Business Administration	3,932	7,034	7,187	82.78%
Education	18,089	19,394	15,785	-12.74%
Engineering	32,810	54,783	53,914	64.32%
George Bush	76	70	239	214.47%
Geosciences	4,229	7,218	8,913	110.76%
Liberal Arts	7,730	10,501	8,112	4.94%
Other	243	0	0	N/A
Science	19,085	32,173	35,764	87.39%
Veterinary Medicine	5,802	9,630	9,467	63.17%
UNIVERSITY TOTAL	114,109	177,953	173,430	51.99%

SUMMER
WEIGHTED SEMESTER CREDIT HOURS
PhD



WSCH was computed from funded SCH using the weights applicable for each term, has Excess Hours removed, includes the UG T/TT Bonus, but does not include Vet Professional hours
 Other may include SABR, CAEX, INTG, & COFD