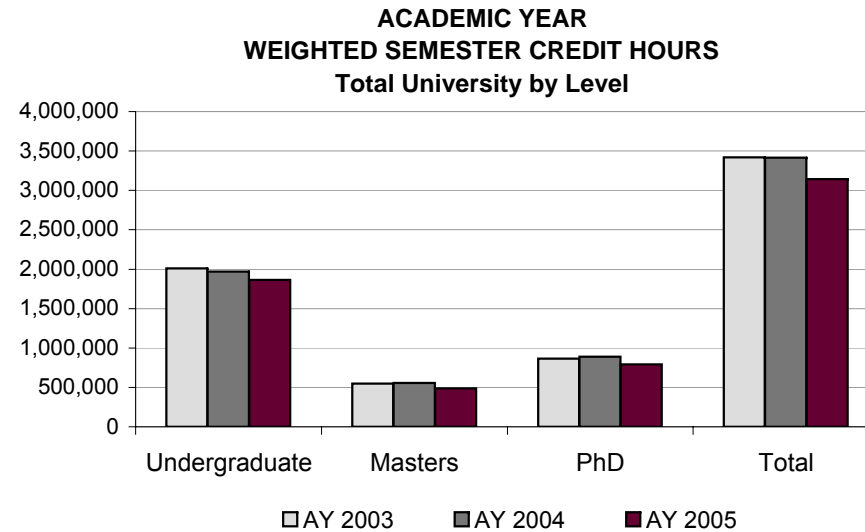
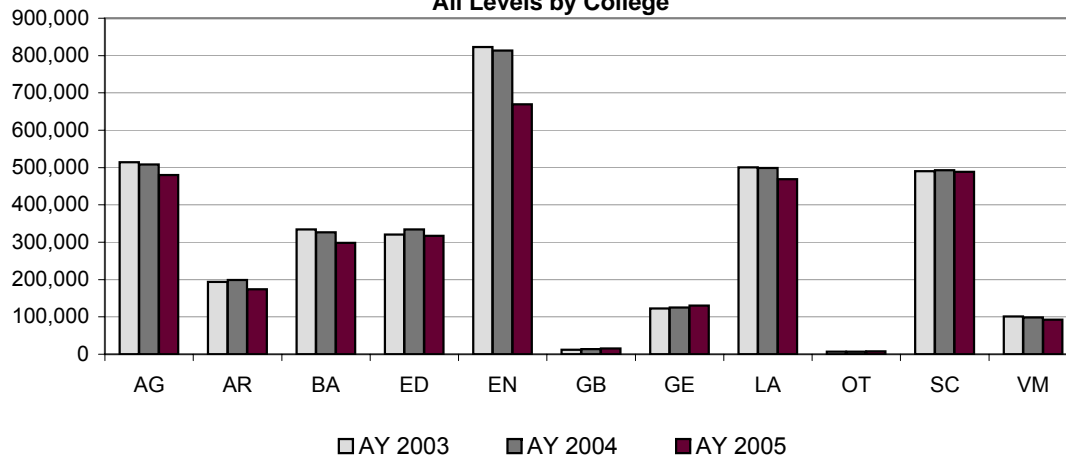


WEIGHTED SEMESTER CREDIT HOURS ALL LEVELS				
	AY 2003	AY 2004	AY 2005	%Δ AY03-AY05
Agriculture	513,979	507,955	479,792	-6.65%
Architecture	193,570	198,644	174,399	-9.90%
Business Administration	334,072	326,581	298,626	-10.61%
Education	320,997	334,326	317,094	-1.22%
Engineering	823,271	813,194	669,367	-18.69%
George Bush	12,394	13,612	15,399	24.25%
Geosciences	122,585	124,799	130,664	6.59%
Liberal Arts	500,472	499,038	468,860	-6.32%
Other	7,074	7,253	7,937	12.20%
Science	490,357	493,246	488,902	-0.30%
Veterinary Medicine	101,509	98,242	92,544	-8.83%
UNIVERSITY TOTAL	3,420,280	3,416,890	3,143,584	-8.09%



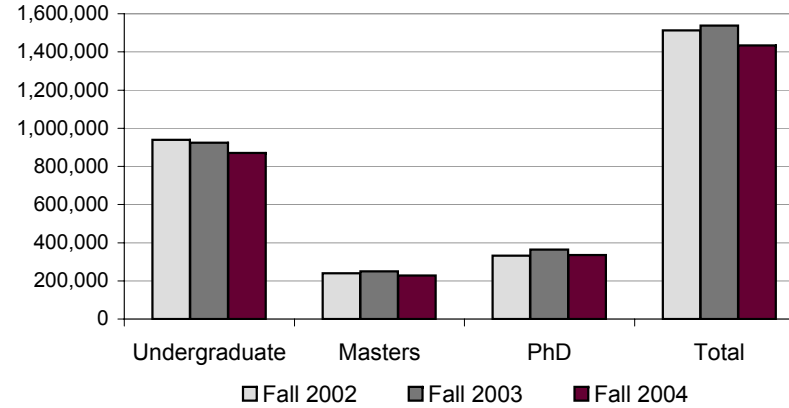
**ACADEMIC YEAR
 WEIGHTED SEMESTER CREDIT HOURS
 All Levels by College**



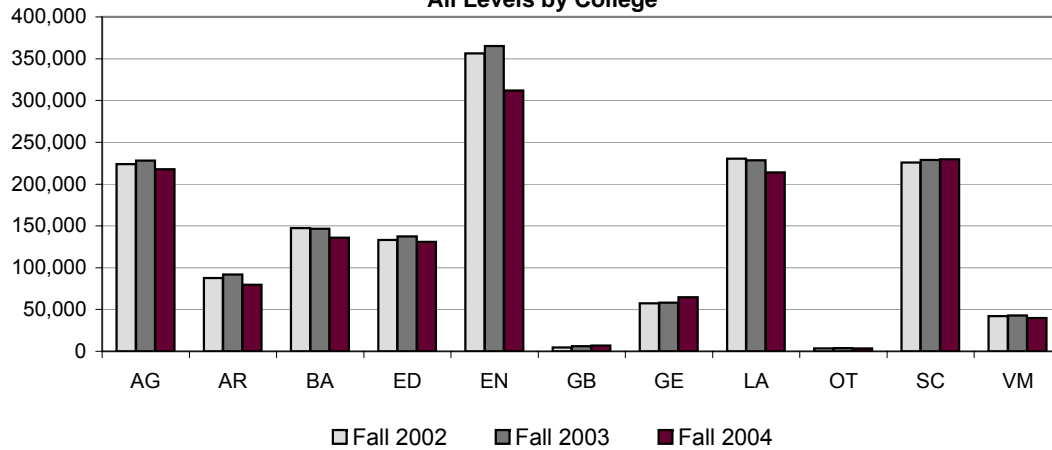
WSCH has all Excess Hours removed, includes the UG T/TT Bonus, but does not include Vet Professional hours
 Other may include: INTG, CAEX, SABX

WEIGHTED SEMESTER CREDIT HOURS ALL LEVELS				
	Fall 2002	Fall 2003	Fall 2004	%Δ Fa02-Fa04
Agriculture	224,077	228,159	217,809	-2.80%
Architecture	87,836	91,836	79,606	-9.37%
Business Administration	147,290	146,657	135,839	-7.77%
Education	133,057	137,271	131,026	-1.53%
Engineering	356,548	365,013	311,814	-12.55%
George Bush	4,731	6,013	6,962	47.16%
Geosciences	57,569	58,304	64,502	12.04%
Liberal Arts	230,445	228,378	214,058	-7.11%
Other	3,355	4,017	3,596	7.18%
Science	225,845	228,808	229,756	1.73%
Veterinary Medicine	41,948	42,887	39,667	-5.44%
UNIVERSITY TOTAL	1,512,701	1,537,343	1,434,635	-5.16%

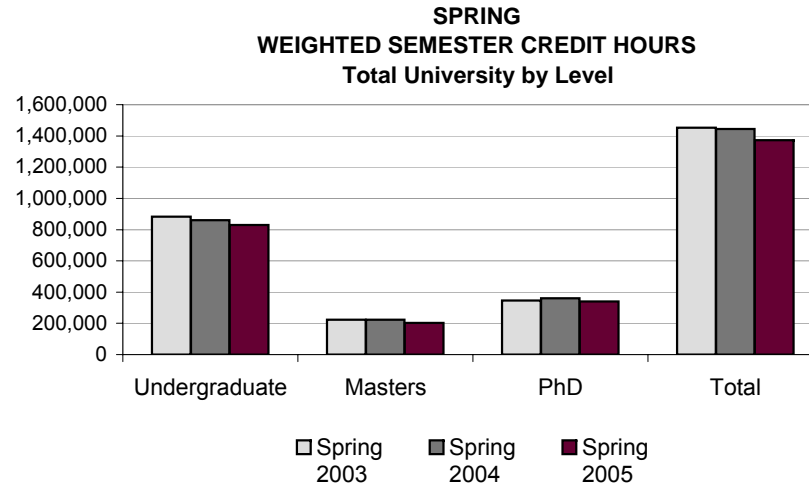
FALL
 WEIGHTED SEMESTER CREDIT HOURS
 Total University by Level



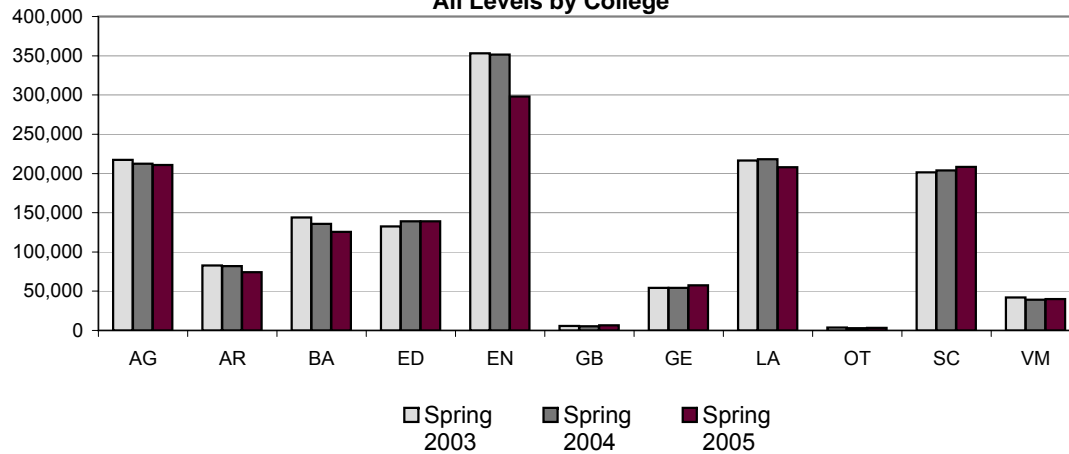
FALL
 WEIGHTED SEMESTER CREDIT HOURS
 All Levels by College



WEIGHTED SEMESTER CREDIT HOURS ALL LEVELS				
	Spring 2003	Spring 2004	Spring 2005	%Δ Sp03-Sp05
Agriculture	217,440	212,609	210,803	-3.05%
Architecture	82,859	81,763	74,212	-10.44%
Business Administration	143,794	135,907	125,665	-12.61%
Education	132,655	139,166	139,141	4.89%
Engineering	353,276	351,551	298,081	-15.62%
George Bush	5,510	5,291	6,560	19.06%
Geosciences	54,248	54,092	57,668	6.30%
Liberal Arts	216,453	218,310	208,040	-3.89%
Other	3,466	2,733	3,409	-1.64%
Science	201,290	203,989	208,385	3.52%
Veterinary Medicine	42,101	39,217	39,896	-5.24%
UNIVERSITY TOTAL	1,453,092	1,444,628	1,371,860	-5.59%

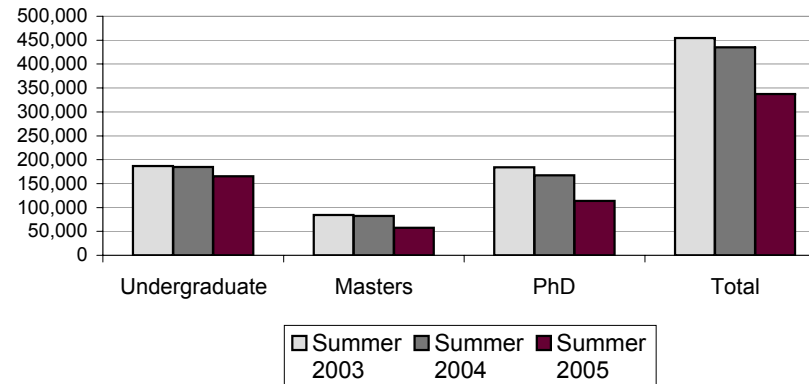


**SPRING
WEIGHTED SEMESTER CREDIT HOURS
All Levels by College**

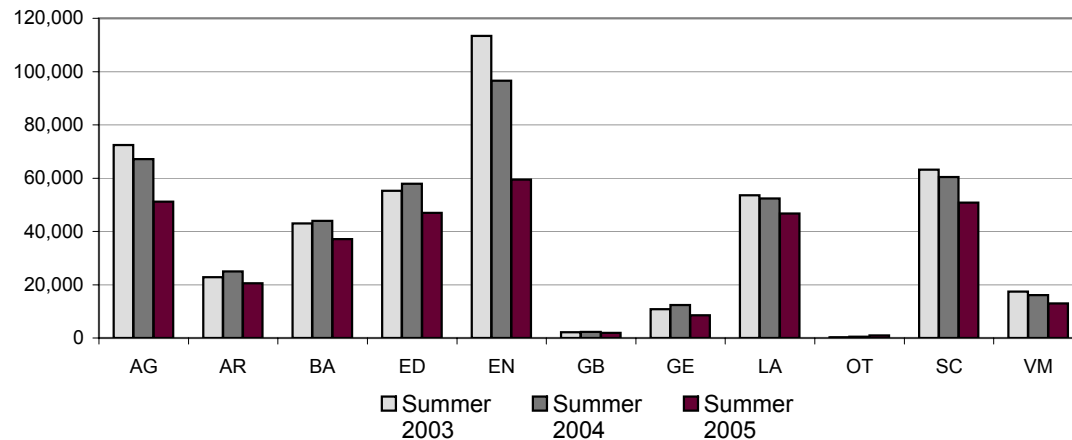


WEIGHTED SEMESTER CREDIT HOURS ALL LEVELS				
	Summer 2003	Summer 2004	Summer 2005	%Δ Su03-Su05
Agriculture	72,462	67,187	51,180	-29.37%
Architecture	22,875	25,045	20,581	-10.03%
Business Administration	42,988	44,017	37,122	-13.65%
Education	55,285	57,889	46,927	-15.12%
Engineering	113,447	96,630	59,472	-47.58%
George Bush	2,153	2,308	1,877	-12.82%
Geosciences	10,768	12,403	8,494	-21.12%
Liberal Arts	53,574	52,350	46,762	-12.72%
Other	253	503	932	268.38%
Science	63,222	60,449	50,761	-19.71%
Veterinary Medicine	17,460	16,138	12,981	-25.65%
UNIVERSITY TOTAL	454,487	434,919	337,089	-25.83%

SUMMER
WEIGHTED SEMESTER CREDIT HOURS
 Total University by Level

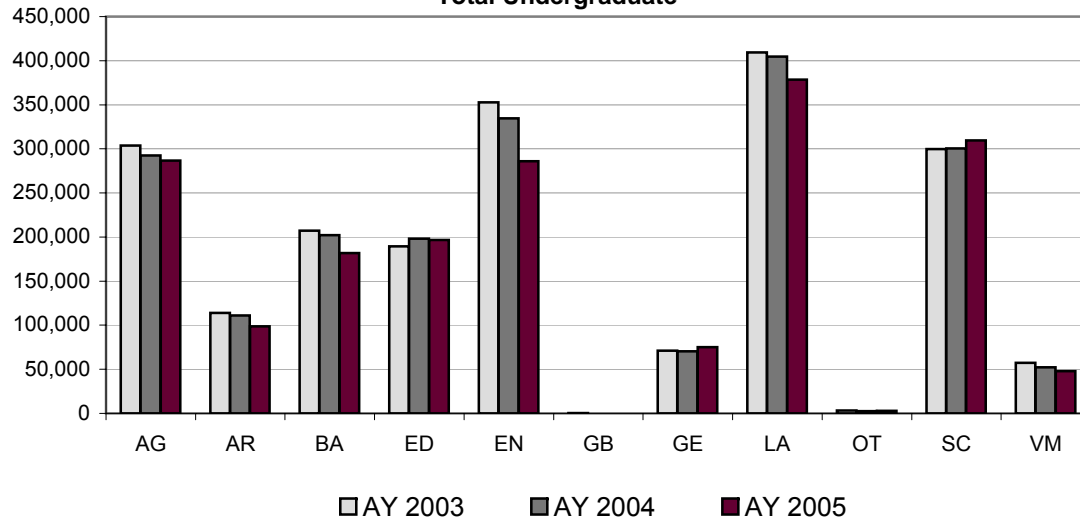


SUMMER
WEIGHTED SEMESTER CREDIT HOURS
 All Levels by College



WEIGHTED SEMESTER CREDIT HOURS UNDERGRADUATE													
	AY 2003				AY 2004				AY 2005				%Δ
	LD	UD	T/TT Sup	Total	LD	UD	T/TT Sup	Total	LD	UD	T/TT Sup	Total	AY03-AY05
Agriculture	98,177	186,232	19,259	303,668	91,847	182,541	18,293	292,681	84,261	184,097	18,353	286,711	-5.58%
Architecture	57,008	49,555	7,454	114,017	55,898	48,263	6,958	111,119	44,549	48,235	5,823	98,607	-13.52%
Business Admin	69,014	131,012	7,143	207,169	69,341	126,225	6,412	201,978	58,207	118,818	4,857	181,882	-12.21%
Education	78,079	107,842	3,663	189,584	78,138	116,276	3,906	198,320	77,416	115,126	4,227	196,769	3.79%
Engineering	111,446	222,772	18,643	352,861	102,424	213,965	18,333	334,722	77,201	192,147	16,680	286,028	-18.94%
George Bush	63	306	29	398	0	41	2	43	0	45	2	47	-88.19%
Geosciences	45,344	21,424	4,488	71,256	44,719	21,400	4,325	70,444	47,435	23,754	3,895	75,084	5.37%
Liberal Arts	219,615	170,971	18,881	409,467	213,434	171,321	19,765	404,520	204,125	156,039	18,323	378,487	-7.57%
Other	3,164	22	2	3,188	2,636	0	0	2,636	2,751	90	0	2,841	-10.88%
Science	194,848	93,703	11,386	299,937	192,915	94,949	12,715	300,579	202,216	95,996	11,313	309,525	3.20%
Veterinary Med	8,532	45,372	3,520	57,424	6,937	42,295	3,079	52,311	6,284	38,947	2,806	48,037	-16.35%
UNIVERSITY TOTAL	885,290	1,029,211	94,468	2,008,969	858,289	1,017,276	93,788	1,969,353	804,445	973,294	86,279	1,864,018	-7.22%

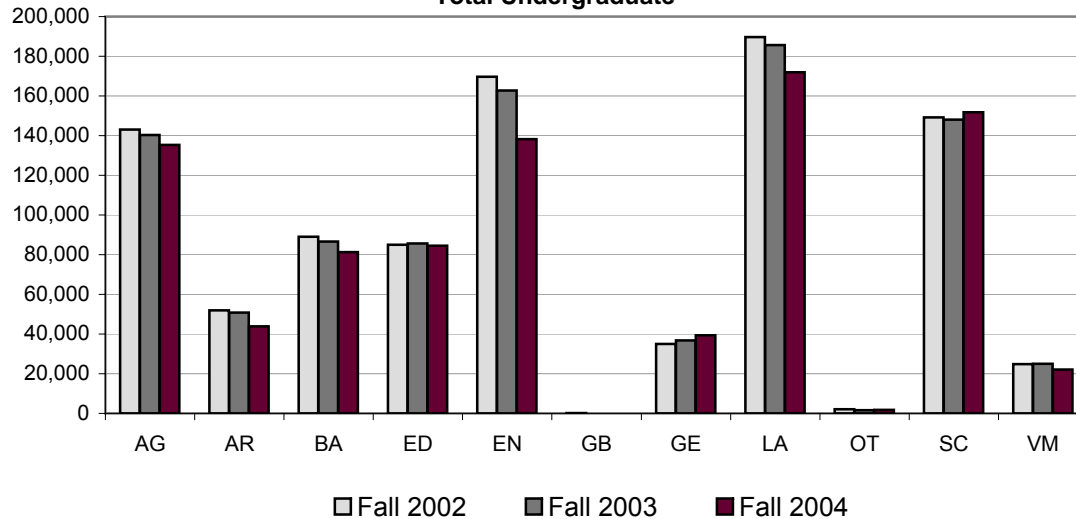
ACADEMIC YEAR
 WEIGHTED SEMESTER CREDIT HOURS
 Total Undergraduate



WSCH has all Excess Hours removed, includes the UG T/TT Bonus, but does not include Vet Professional hours
 Other may include: INTG, CAEX, SABX

WEIGHTED SEMESTER CREDIT HOURS UNDERGRADUATE													
	Fall 2002				Fall 2003				Fall 2004				%Δ
	LD	UD	T/TT Sup	Total	LD	UD	T/TT Sup	Total	LD	UD	T/TT Sup	Total	Fa02-Fa04
Agriculture	48,400	85,329	9,265	142,994	46,753	84,691	8,948	140,392	42,434	84,161	8,742	135,337	-5.35%
Architecture	26,808	21,780	3,380	51,968	26,141	21,412	3,229	50,782	20,312	21,122	2,510	43,944	-15.44%
Business Admin	29,481	55,938	3,583	89,002	29,009	54,215	3,450	86,674	26,922	51,847	2,524	81,293	-8.66%
Education	35,407	47,926	1,676	85,009	35,131	48,909	1,619	85,659	34,502	48,254	1,731	84,487	-0.61%
Engineering	55,378	104,916	9,391	169,685	53,243	100,638	8,855	162,736	38,853	91,298	8,110	138,261	-18.52%
George Bush	63	53	7	123	0	12	0	12	0	17	0	17	-86.18%
Geosciences	23,152	9,648	2,278	35,078	24,647	9,702	2,393	36,742	26,052	11,169	2,061	39,282	11.98%
Liberal Arts	105,495	74,861	9,267	189,623	103,318	72,266	10,114	185,698	97,857	65,214	8,830	171,901	-9.35%
Other	2,114	0	0	2,114	1,618	0	0	1,618	1,667	74	0	1,741	-17.64%
Science	101,782	41,702	5,676	149,160	100,308	40,839	6,902	148,049	105,169	40,916	5,693	151,778	1.76%
Veterinary Med	3,416	19,932	1,503	24,851	4,438	19,111	1,432	24,981	3,600	17,147	1,365	22,112	-11.02%
UNIVERSITY TOTAL	431,496	462,085	46,026	939,607	424,606	451,795	46,942	923,343	397,368	431,219	41,566	870,153	-7.39%

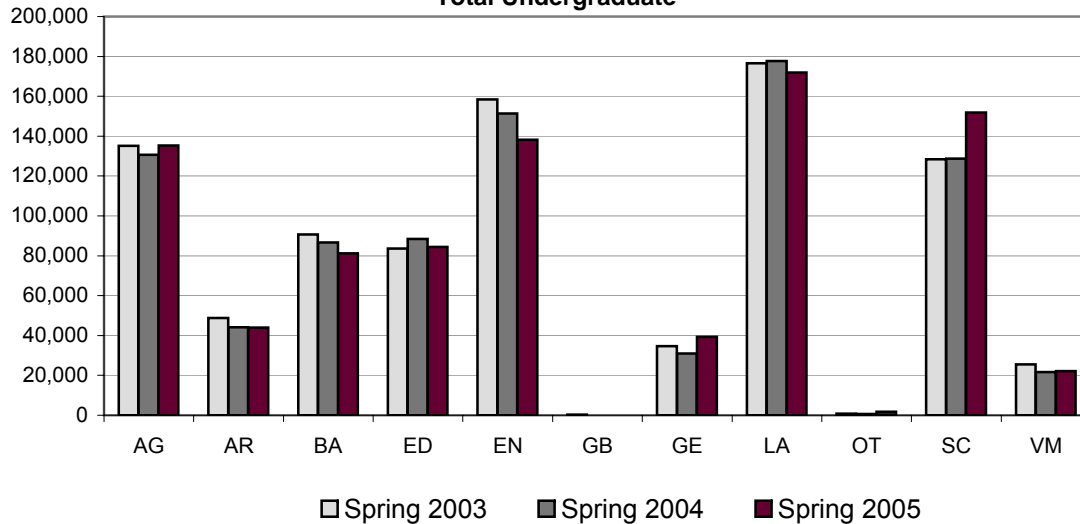
FALL
 WEIGHTED SEMESTER CREDIT HOURS
 Total Undergraduate



WSCH has all Excess Hours removed, includes the UG T/TT Bonus, but does not include Vet Professional hours
 Other may include: INTG, CAEX, SABX

WEIGHTED SEMESTER CREDIT HOURS UNDERGRADUATE													
	Spring 2003				Spring 2004				Spring 2005				%Δ
	LD	UD	T/TT Sup	Total	LD	UD	T/TT Sup	Total	LD	UD	T/TT Sup	Total	Sp03-Sp05
Agriculture	43,068	83,202	8,832	135,102	40,460	81,759	8,378	130,597	38,244	82,541	8,430	129,215	-4.36%
Architecture	23,327	22,187	3,219	48,733	21,466	20,083	2,594	44,143	17,655	21,148	2,437	41,240	-15.38%
Business Admin	33,479	54,009	3,182	90,670	33,434	50,650	2,655	86,739	25,200	48,364	2,011	75,575	-16.65%
Education	35,609	46,531	1,475	83,615	34,876	51,943	1,692	88,511	36,632	53,734	2,062	92,428	10.54%
Engineering	49,170	100,735	8,475	158,380	44,617	98,149	8,664	151,430	34,404	90,149	7,965	132,518	-16.33%
George Bush	0	241	22	263	0	18	1	19	0	22	2	24	-90.87%
Geosciences	21,458	11,086	2,085	34,629	18,952	10,247	1,845	31,044	20,067	11,399	1,736	33,202	-4.12%
Liberal Arts	93,771	75,103	7,733	176,607	94,745	74,164	8,789	177,698	89,744	70,778	8,710	169,232	-4.18%
Other	804	22	2	828	690	0	0	690	796	16	0	812	-1.93%
Science	84,209	39,571	4,625	128,405	83,310	40,602	4,788	128,700	88,437	40,883	4,628	133,948	4.32%
Veterinary Med	4,399	19,629	1,558	25,586	2,374	17,913	1,347	21,634	2,325	16,965	1,268	20,558	-19.65%
UNIVERSITY TOTAL	389,294	452,316	41,208	882,818	374,924	445,528	40,753	861,205	353,504	435,999	39,249	828,752	-6.12%

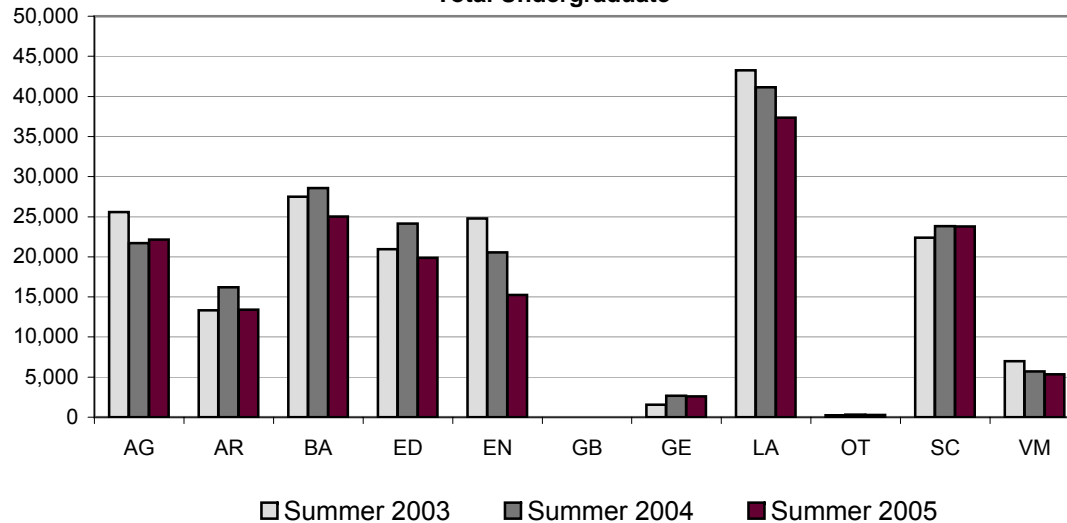
SPRING
WEIGHTED SEMESTER CREDIT HOURS
Total Undergraduate



WSCH has all Excess Hours removed, includes the UG T/TT Bonus, but does not include Vet Professional hours
 Other may include: INTG, CAEX, SABX

WEIGHTED SEMESTER CREDIT HOURS UNDERGRADUATE													
	Summer 2003				Summer 2004				Summer 2005				%Δ
	LD	UD	T/TT Sup	Total	LD	UD	T/TT Sup	Total	LD	UD	T/TT Sup	Total	Su03-Su05
Agriculture	6,709	17,701	1,162	25,572	4,634	16,091	967	21,692	3,583	17,395	1,181	22,159	-13.35%
Architecture	6,873	5,588	855	13,316	8,291	6,768	1,135	16,194	6,582	5,965	876	13,423	0.80%
Business Admin	6,054	21,065	378	27,497	6,898	21,360	307	28,565	6,085	18,607	322	25,014	-9.03%
Education	7,063	13,385	512	20,960	8,131	15,424	595	24,150	6,282	13,138	434	19,854	-5.28%
Engineering	6,898	17,121	777	24,796	4,564	15,178	814	20,556	3,944	10,700	605	15,249	-38.50%
George Bush	0	12	0	12	0	11	1	12	0	6	0	6	-50.00%
Geosciences	734	690	125	1,549	1,120	1,451	87	2,658	1,316	1,186	98	2,600	67.85%
Liberal Arts	20,349	21,007	1,881	43,237	15,371	24,891	862	41,124	16,524	20,047	783	37,354	-13.61%
Other	246	0	0	246	328	0	0	328	288	0	0	288	17.07%
Science	8,857	12,430	1,085	22,372	9,297	13,508	1,025	23,830	8,610	14,197	992	23,799	6.38%
Veterinary Med	717	5,811	459	6,987	125	5,271	300	5,696	359	4,835	173	5,367	-23.19%
UNIVERSITY TOTAL	64,500	114,810	7,234	186,544	58,759	119,953	6,093	184,805	53,573	106,076	5,464	165,113	-11.49%

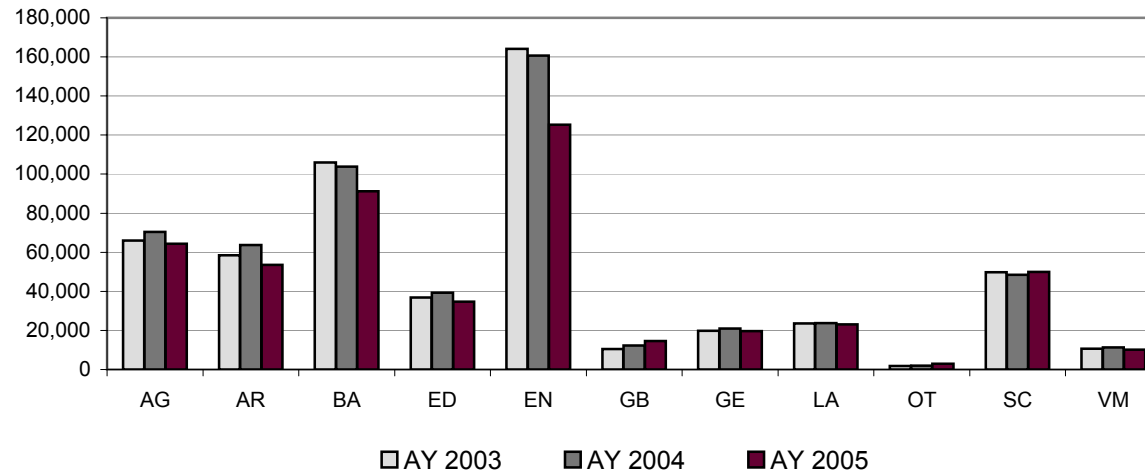
SUMMER
WEIGHTED SEMESTER CREDIT HOURS
Total Undergraduate



WSCH has all Excess Hours removed, includes the UG T/TT Bonus, but does not include Vet Professional hours
 Other may include: INTG, CAEX, SABX

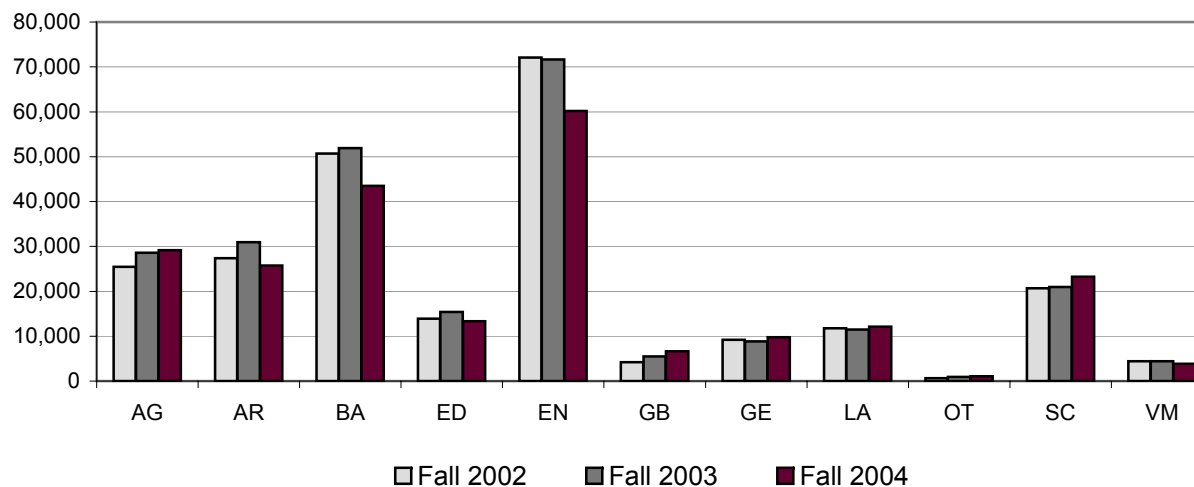
WEIGHTED SEMESTER CREDIT HOURS MASTERS				
	AY 2003	AY 2004	AY 2005	%Δ AY03 - AY05
Agriculture	66,053	70,451	64,355	-2.57%
Architecture	58,436	63,690	53,503	-8.44%
Business Administration	105,900	103,806	91,206	-13.88%
Education	36,832	39,257	34,701	-5.79%
Engineering	164,174	160,693	125,240	-23.72%
George Bush	10,446	12,249	14,502	38.83%
Geosciences	19,845	20,904	19,729	-0.58%
Liberal Arts	23,579	23,704	23,145	-1.84%
Other	1,806	1,953	2,873	59%
Science	49,853	48,511	49,948	0.19%
Veterinary Medicine	10,704	11,290	10,102	-5.62%
UNIVERSITY TOTAL	547,628	556,508	489,304	-10.65%

ACADEMIC YEAR
 WEIGHTED SEMESTER CREDIT HOURS
 Masters



WEIGHTED SEMESTER CREDIT HOURS MASTERS				
	Fall 2002	Fall 2003	Fall 2004	%Δ Fa02 - Fa04
Agriculture	25,459	28,583	29,186	14.64%
Architecture	27,415	30,980	25,719	-6.19%
Business Administration	50,712	51,939	43,485	-14.25%
Education	13,913	15,381	13,338	-4.13%
Engineering	72,117	71,658	60,212	-16.51%
George Bush	4,181	5,483	6,607	58.02%
Geosciences	9,198	8,813	9,751	6.01%
Liberal Arts	11,731	11,470	12,135	3.44%
Other	607	931	1,073	77%
Science	20,671	20,951	23,253	12.49%
Veterinary Medicine	4,442	4,422	3,828	-13.82%
UNIVERSITY TOTAL	240,446	250,611	228,587	-4.93%

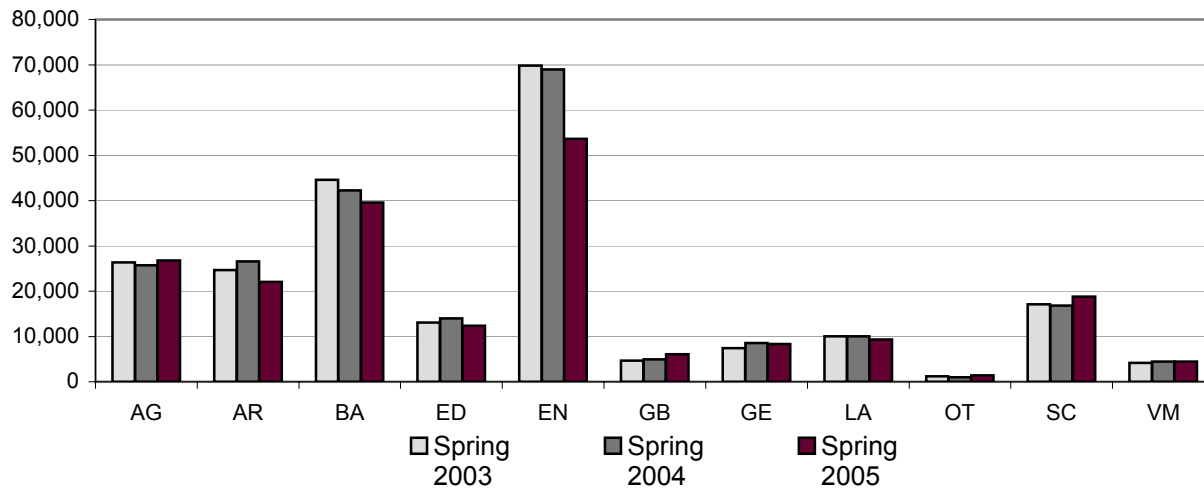
FALL
 WEIGHTED SEMESTER CREDIT HOURS
 Masters



WSCH has all Excess Hours removed, includes the UG T/TT Bonus, but does not include Vet Professional hours
 Other may include: INTG, CAEX, SABX

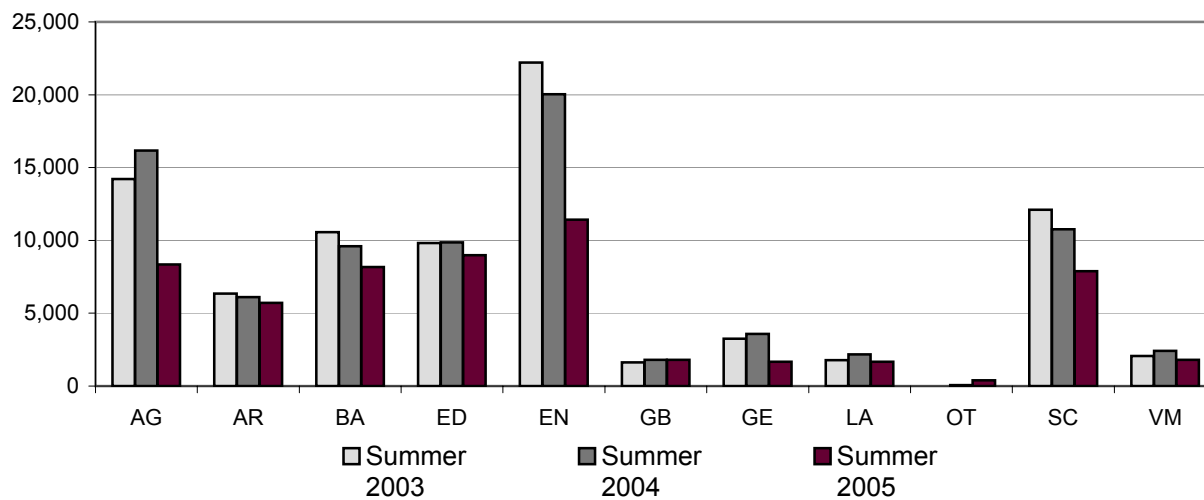
WEIGHTED SEMESTER CREDIT HOURS MASTERS				
	Spring 2003	Spring 2004	Spring 2005	%Δ Sp03 - Sp05
Agriculture	26,390	25,708	26,811	1.60%
Architecture	24,672	26,602	22,076	-10.52%
Business Administration	44,616	42,271	39,545	-11.37%
Education	13,106	14,010	12,379	-5.55%
Engineering	69,841	69,010	53,615	-23.23%
George Bush	4,634	4,971	6,100	31.64%
Geosciences	7,398	8,518	8,313	12.37%
Liberal Arts	10,062	10,053	9,332	-7.26%
Other	1,192	957	1,399	17%
Science	17,070	16,786	18,818	10.24%
Veterinary Medicine	4,197	4,448	4,462	6.31%
UNIVERSITY TOTAL	223,178	223,334	202,850	-9.11%

**SPRING
 WEIGHTED SEMESTER CREDIT HOURS
 Masters**



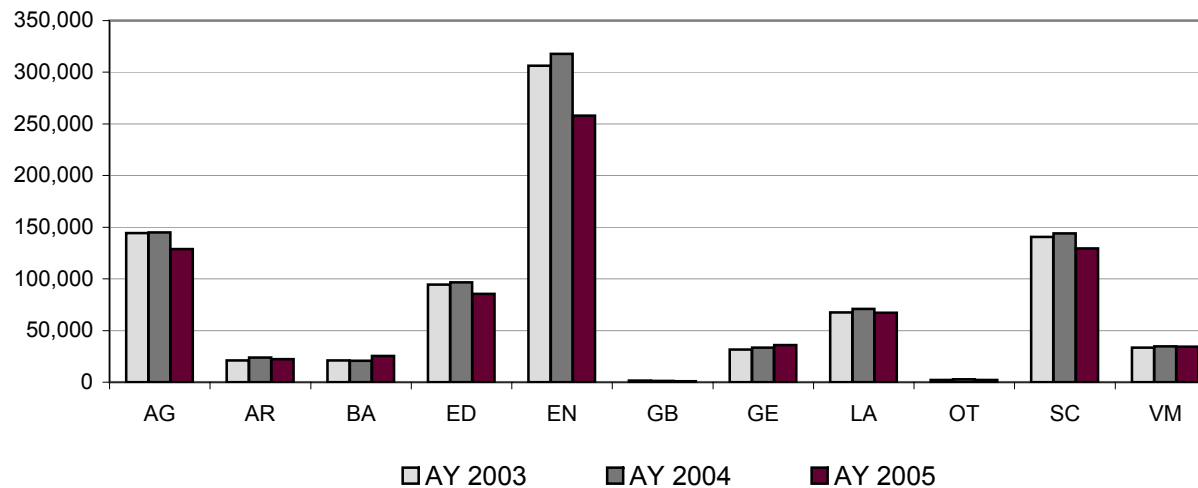
WEIGHTED SEMESTER CREDIT HOURS MASTERS				
	Summer 2003	Summer 2004	Summer 2005	%Δ Su03 - Su05
Agriculture	14,204	16,160	8,358	-41.16%
Architecture	6,349	6,108	5,708	-10.10%
Business Administration	10,572	9,596	8,176	-22.66%
Education	9,813	9,866	8,984	-8.45%
Engineering	22,216	20,025	11,413	-48.63%
George Bush	1,631	1,795	1,795	10.06%
Geosciences	3,249	3,573	1,665	-48.75%
Liberal Arts	1,786	2,181	1,678	-6.05%
Other	7	65	401	5629%
Science	12,112	10,774	7,877	-34.97%
Veterinary Medicine	2,065	2,420	1,812	-12.25%
UNIVERSITY TOTAL	84,004	82,563	57,867	-31.11%

**SUMMER
 WEIGHTED SEMESTER CREDIT HOURS
 Masters**



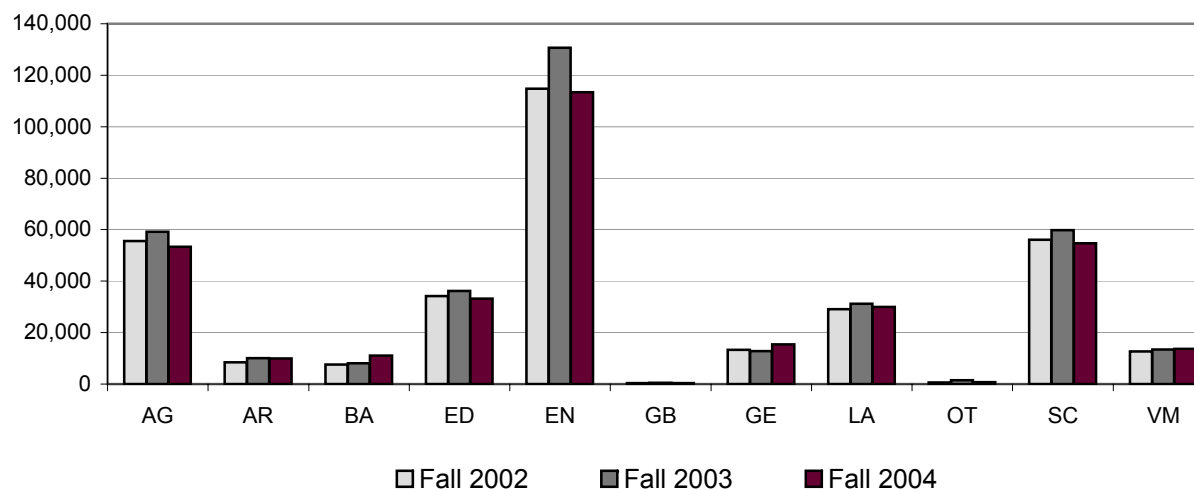
WEIGHTED SEMESTER CREDIT HOURS				
PhD				
	AY 2003	AY 2004	AY 2005	%Δ AY03 - AY05
Agriculture	144,258	144,823	128,726	-10.77%
Architecture	21,117	23,835	22,289	5.55%
Business Administration	21,003	20,797	25,538	21.59%
Education	94,581	96,749	85,624	-9.47%
Engineering	306,236	317,779	258,099	-15.72%
George Bush	1,550	1,320	850	-45.16%
Geosciences	31,484	33,451	35,851	13.87%
Liberal Arts	67,426	70,814	67,228	-0.29%
Other	2,080	2,664	2,223	6.88%
Science	140,567	144,156	129,429	-7.92%
Veterinary Medicine	33,381	34,641	34,405	3.07%
UNIVERSITY TOTAL	863,683	891,029	790,262	-8.50%

ACADEMIC YEAR
 WEIGHTED SEMESTER CREDIT HOURS
 PhD



WEIGHTED SEMESTER CREDIT HOURS				
PhD				
	Fall 2002	Fall 2003	Fall 2004	%Δ Fa02-Fa04
Agriculture	55,624	59,184	53,286	-4.20%
Architecture	8,453	10,074	9,943	17.63%
Business Administration	7,576	8,044	11,061	46.00%
Education	34,135	36,231	33,201	-2.74%
Engineering	114,746	130,619	113,341	-1.22%
George Bush	427	518	338	-20.84%
Geosciences	13,293	12,749	15,469	16.37%
Liberal Arts	29,091	31,210	30,022	3.20%
Other	634	1,468	782	23.34%
Science	56,014	59,808	54,725	-2.30%
Veterinary Medicine	12,655	13,484	13,727	8.47%
UNIVERSITY TOTAL	332,648	363,389	335,895	0.98%

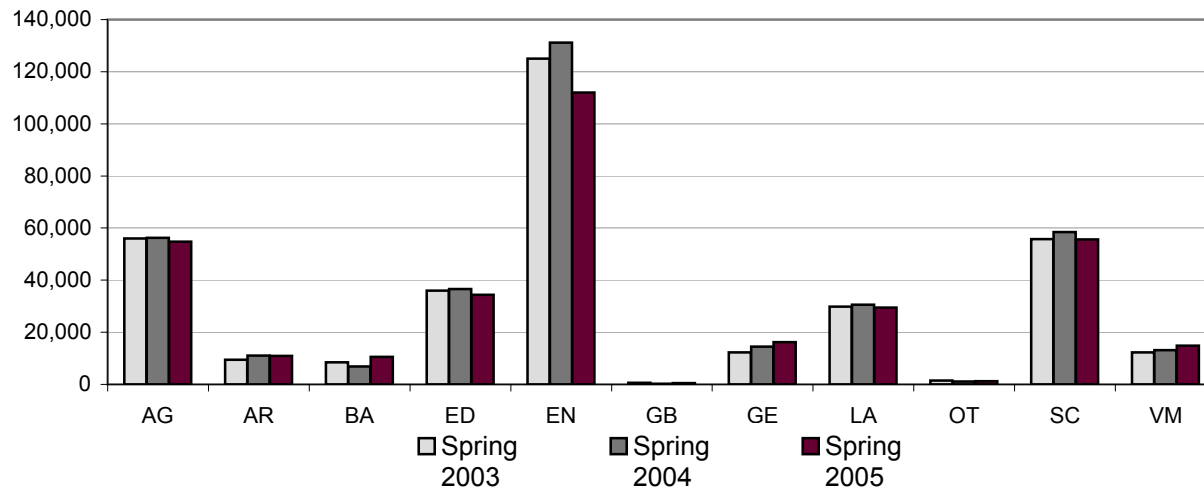
FALL
 WEIGHTED SEMESTER CREDIT HOURS
 PhD



WSCH has all Excess Hours removed, includes the UG T/TT Bonus, but does not include Vet Professional hours
 Other may include: INTG, CAEX, SABX

WEIGHTED SEMESTER CREDIT HOURS				
PhD				
	Spring 2003	Spring 2004	Spring 2005	%Δ Sp03 - Sp05
Agriculture	55,948	56,304	54,777	-2.09%
Architecture	9,454	11,018	10,896	15.25%
Business Administration	8,508	6,897	10,545	23.94%
Education	35,934	36,645	34,334	-4.45%
Engineering	125,055	131,111	111,948	-10.48%
George Bush	613	301	436	-28.87%
Geosciences	12,221	14,530	16,153	32.17%
Liberal Arts	29,784	30,559	29,476	-1.03%
Other	1,446	1,086	1,198	-17.15%
Science	55,815	58,503	55,619	-0.35%
Veterinary Medicine	12,318	13,135	14,876	20.77%
UNIVERSITY TOTAL	347,096	360,089	340,258	-1.97%

SPRING
 WEIGHTED SEMESTER CREDIT HOURS
 PhD



WEIGHTED SEMESTER CREDIT HOURS				
PhD				
	Summer 2003	Summer 2004	Summer 2005	%Δ Su03 - Su05
Agriculture	32,686	29,335	20,663	-36.78%
Architecture	3,210	2,743	1,450	-54.83%
Business Administration	4,919	5,856	3,932	-20.07%
Education	24,512	23,873	18,089	-26.20%
Engineering	66,435	56,049	32,810	-50.61%
George Bush	510	501	76	-85.10%
Geosciences	5,970	6,172	4,229	-29.16%
Liberal Arts	8,551	9,045	7,730	-9.60%
Other	0	110	243	N/A
Science	28,738	25,845	19,085	-33.59%
Veterinary Medicine	8,408	8,022	5,802	-30.99%
UNIVERSITY TOTAL	183,939	167,551	114,109	-37.96%

SUMMER
 WEIGHTED SEMESTER CREDIT HOURS
 PhD

